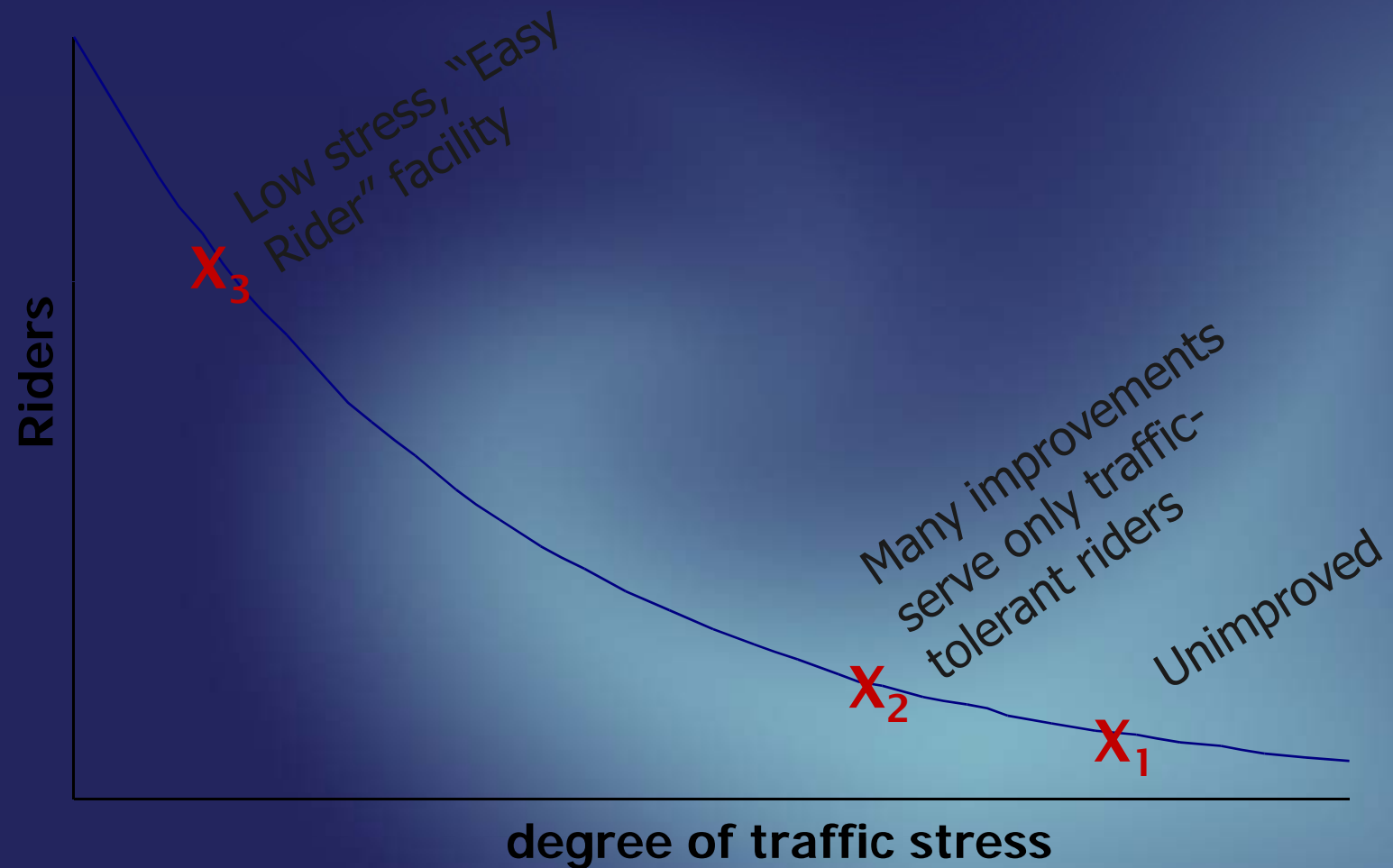


# The Charlesgate Connection



Herb Nolan, Solomon Fund  
Peter Furth, Northeastern University  
February 28, 2008

# Bicycle Ridership versus Traffic Stress

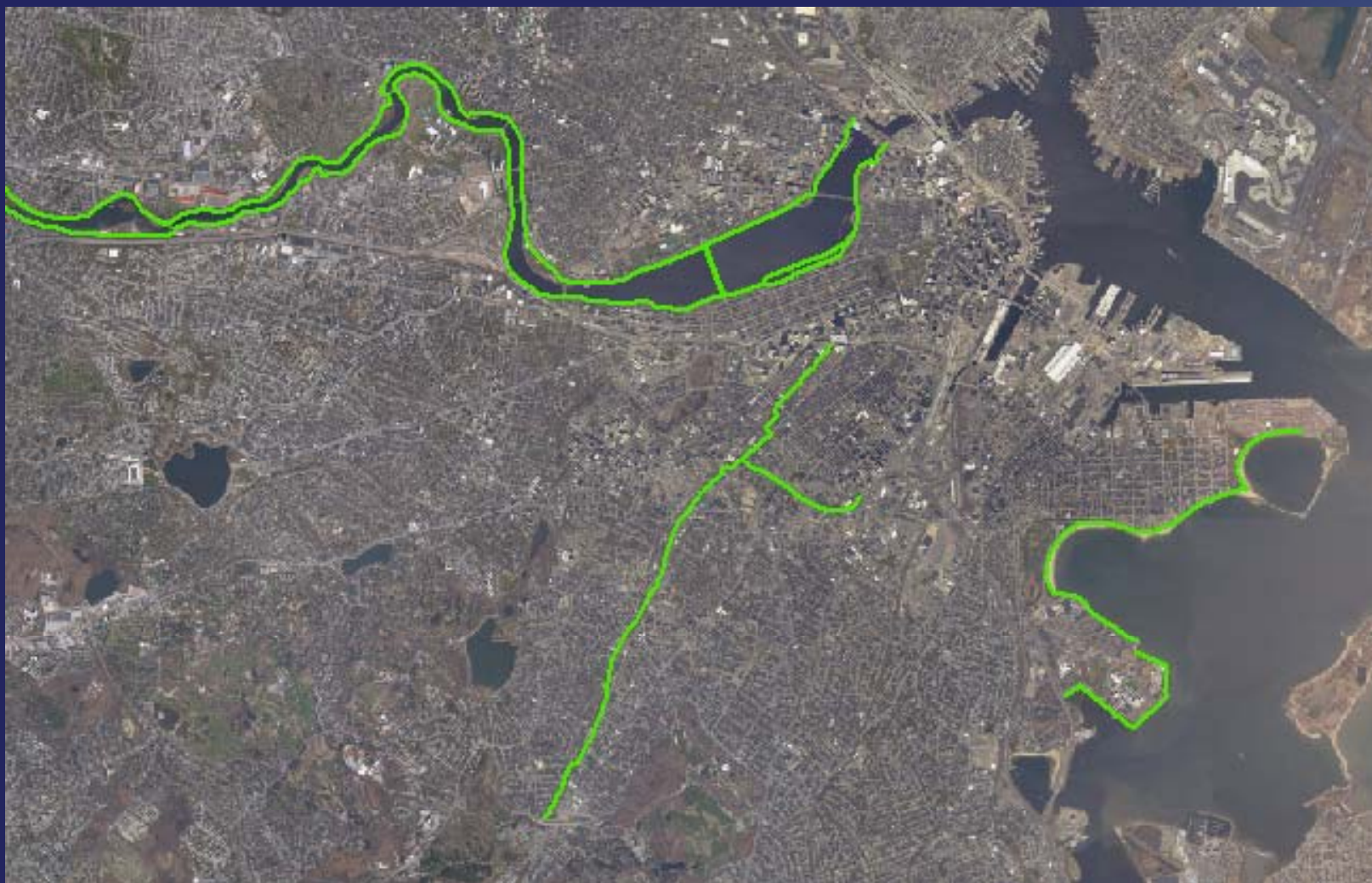


# Existing Greenway Segments

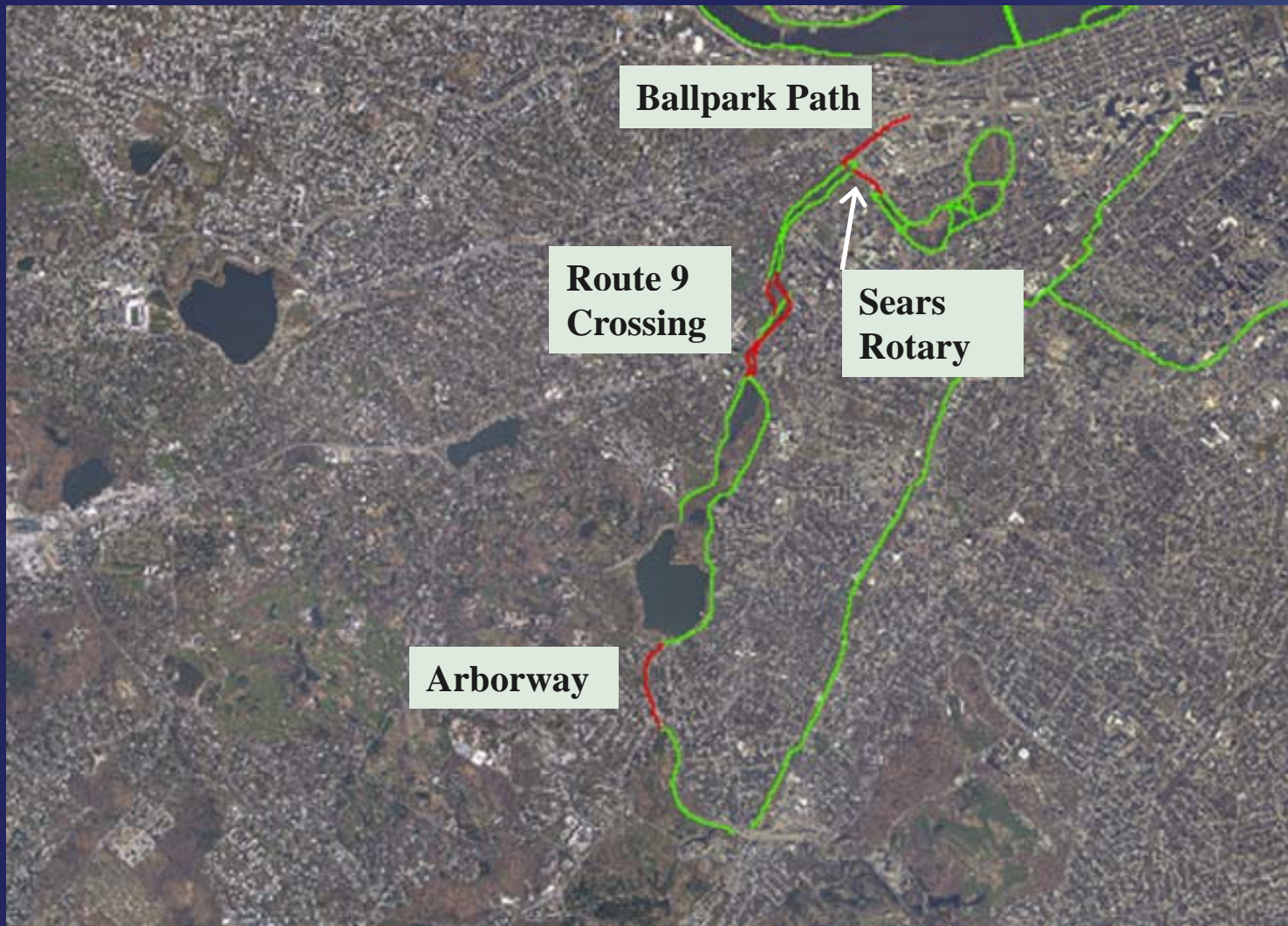




Routes 2+ Miles Long



# Emerald Necklace Projects





# South Bay Harbor Trail

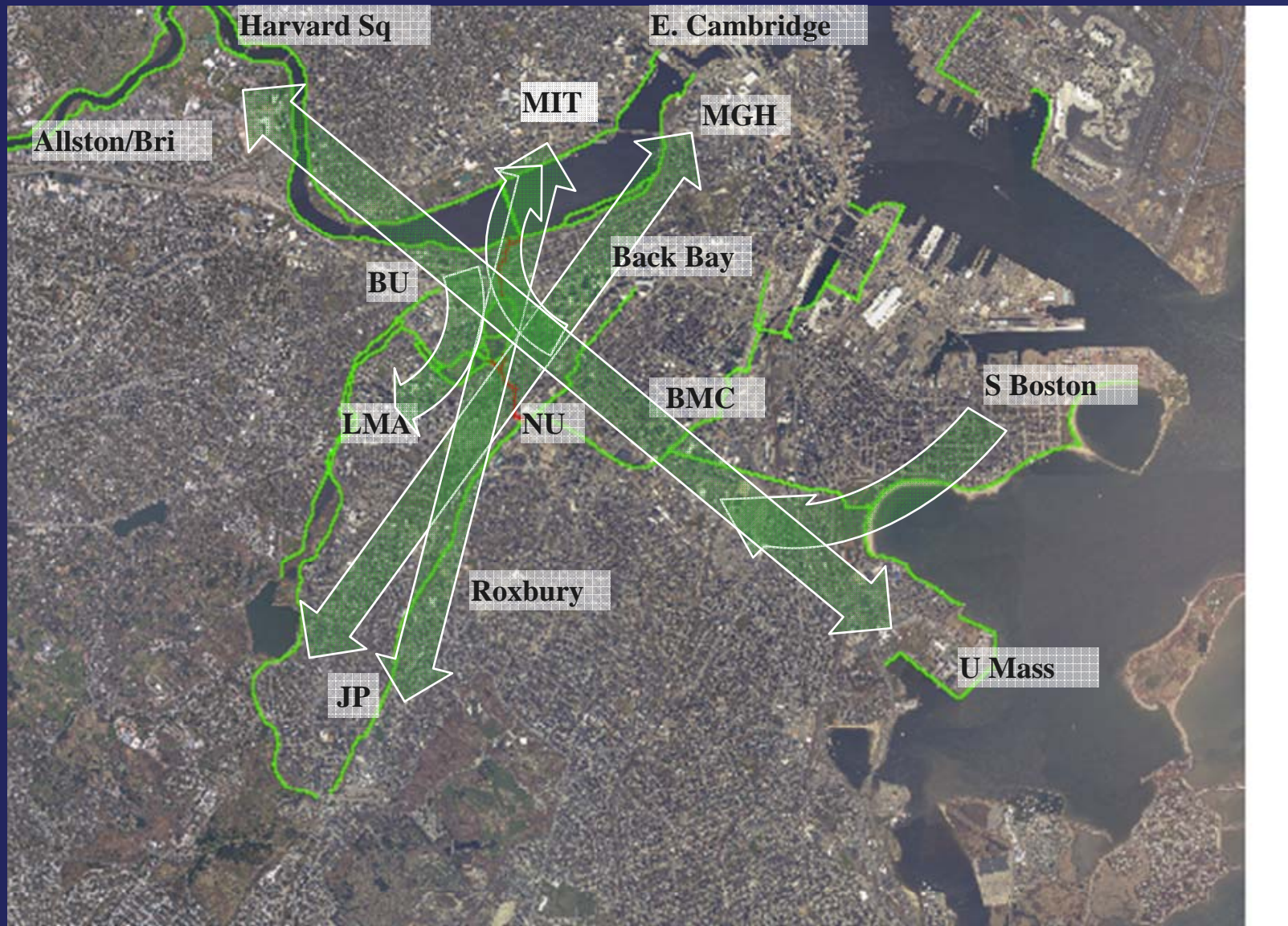




# Charlesgate & World Series Paths: Forging Three Networks into One



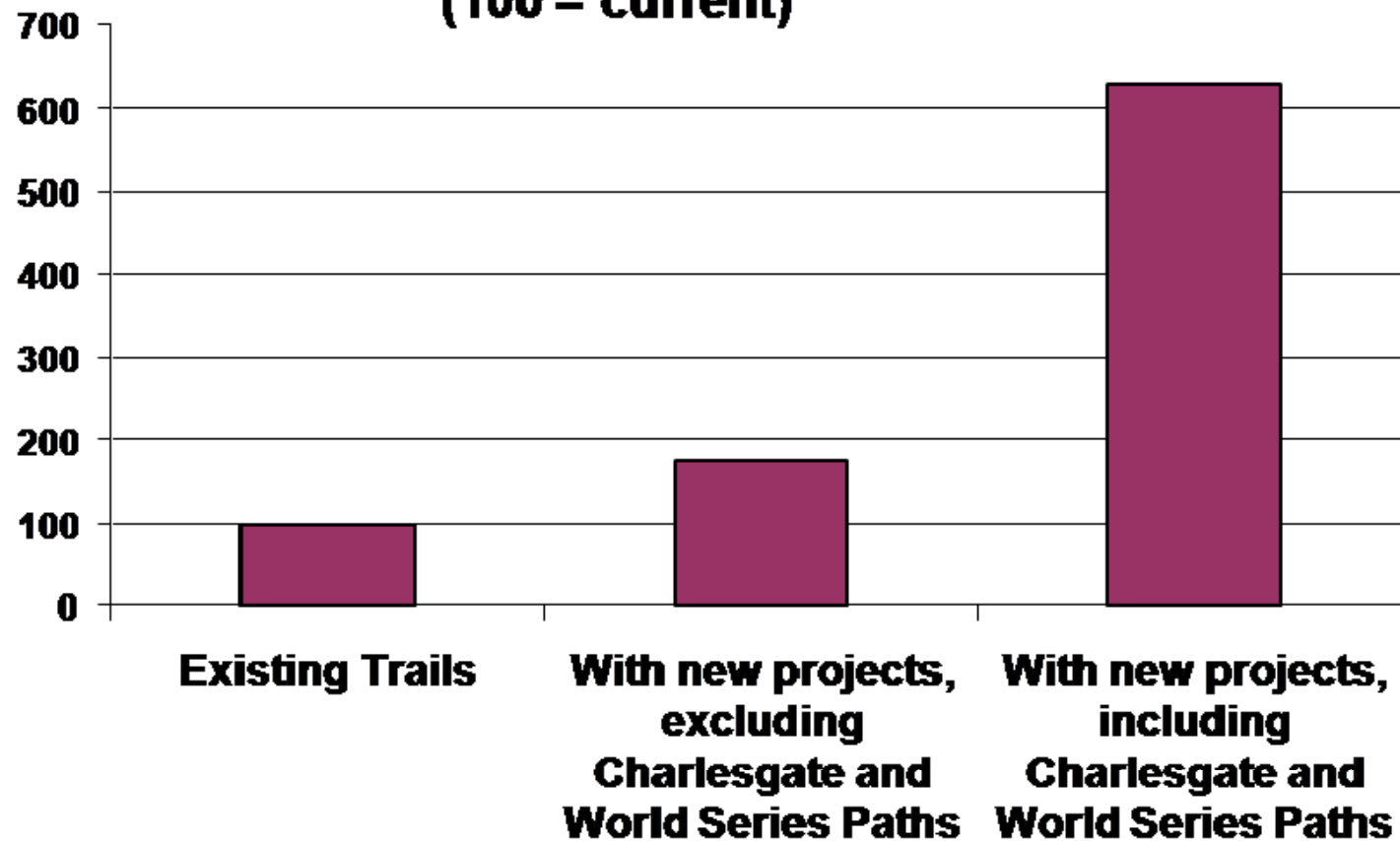






# **Greenway Travel Potential**

**Based on Connected Origin-Destination Pairs**  
**(100 = current)**





The Charles River Basin





**Emerald Necklace**



MAP  
OF THE  
METROPOLITAN DISTRICT  
OF  
BOSTON  
MASSACHUSETTS

Planning the existing public reservations  
and certain  
OPEN SPACES  
as proposed by Charles E. Klutts, Landscape Architect  
in cooperation with  
Metropolitan Park Commission  
Boston January 20, 1916



See, Parks and Public

Map

Map

Map

Map

Map

Map

Map

Map

Map

Map

Map

Map

Map

Map

Map

Map

Map

Map

Map

Map

Map

Map

Map

Map

Map

Map

Map

Map

Map

Map

Map

Map

Map

Map

Map

Map

Map

Map

Map

Map

Map

Map

Map

Map

Map

Map

Map

Map

Map

Map

Map

Map

Map

Map

Map

Map

Map

Map

Map

Map

Map

Map

Map

Map

Map

Map

Map

Map

Map

Map

Map

Map

Map

Map

Map

Map

Map

Map

Map

Map

Map

Map

Map

Map

Map

Map

Map

Map

Map

Map

Map

Map

Map

Map

Map

Map

Map

Map

Map

Map

Map

Map

Map

Map

Map

Map

Map

Map

Map







# Charlesgate Interchange







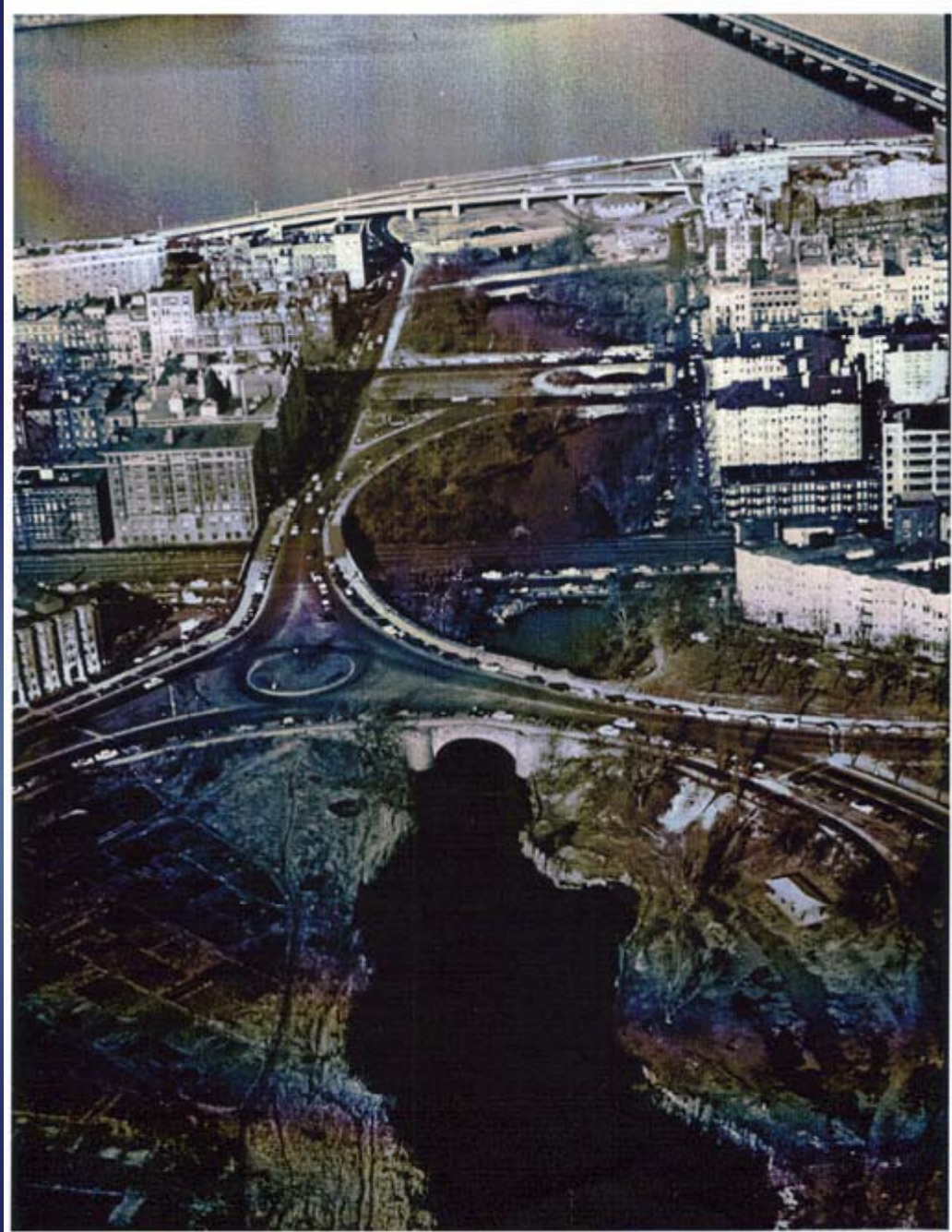
**The Beacon Entrance, 1923**



**New shoreline for Storrow Drive, 1951**



Storrow Drive





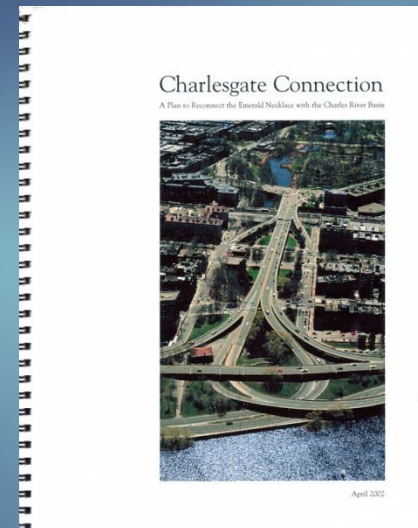
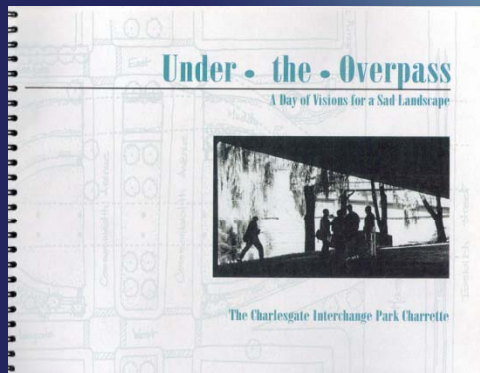


**Charlesgate Interchange, 1966**



# Past planning efforts

- Emerald Necklace Master Plan – 1989
- Muddy River Delta Proposal – 1996
- “Linking the Corridors” - 1997
- Charlesgate Interchange Park Charrette - 1998
- Emerald Necklace Greenway Plan – 2000
- MDC Charlesgate Connection Plan – 2002
- Bicycle Summit- 2007





# 1989 / 2001 Emerald Necklace Master Plan

## CHARLESGATE AREA

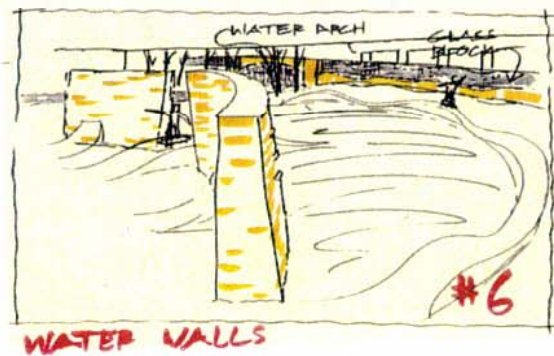
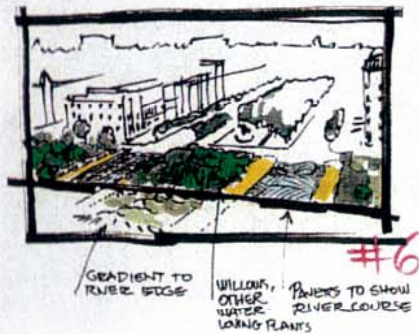
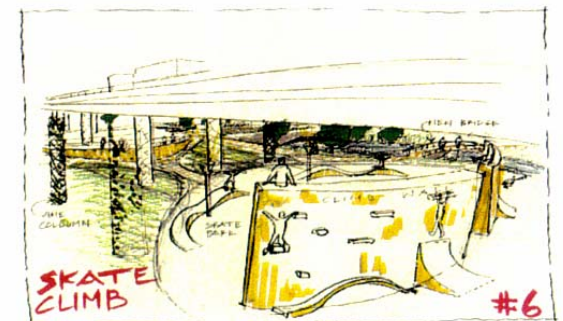
- PROVIDE PEDESTRIAN/BIKE CONNECTION TO CHARLES RIVER VIA PEDESTRIAN BRIDGE
- RECREATE RIVER EDGE WITH PLANT MASSING (EG. SCENIC INTENT IN OLMSTED PARK AND RIVERWAY)
- FACILITATE CIRCULATION BY ADDING A BRIDGE ACROSS THE RIVER
- PLANT FORMAL TREES ALONG COMMONWEALTH AVENUE

## VICTORY GARDENS

- PULL BACK VICTORY GARDENS FROM THE PARKWAY AND THE WATER'S EDGE
- RESTORE LANDSCAPE SURROUNDS
- ALLOW FOR GERALD FLYNN MEMORIAL BOTANICAL GARDEN







1998 "Under the Overpass" charrette



**Legend**

- Primary Thru Path
- Other Existing Paths
- Problem Intersections
- Proposed Curb Openings

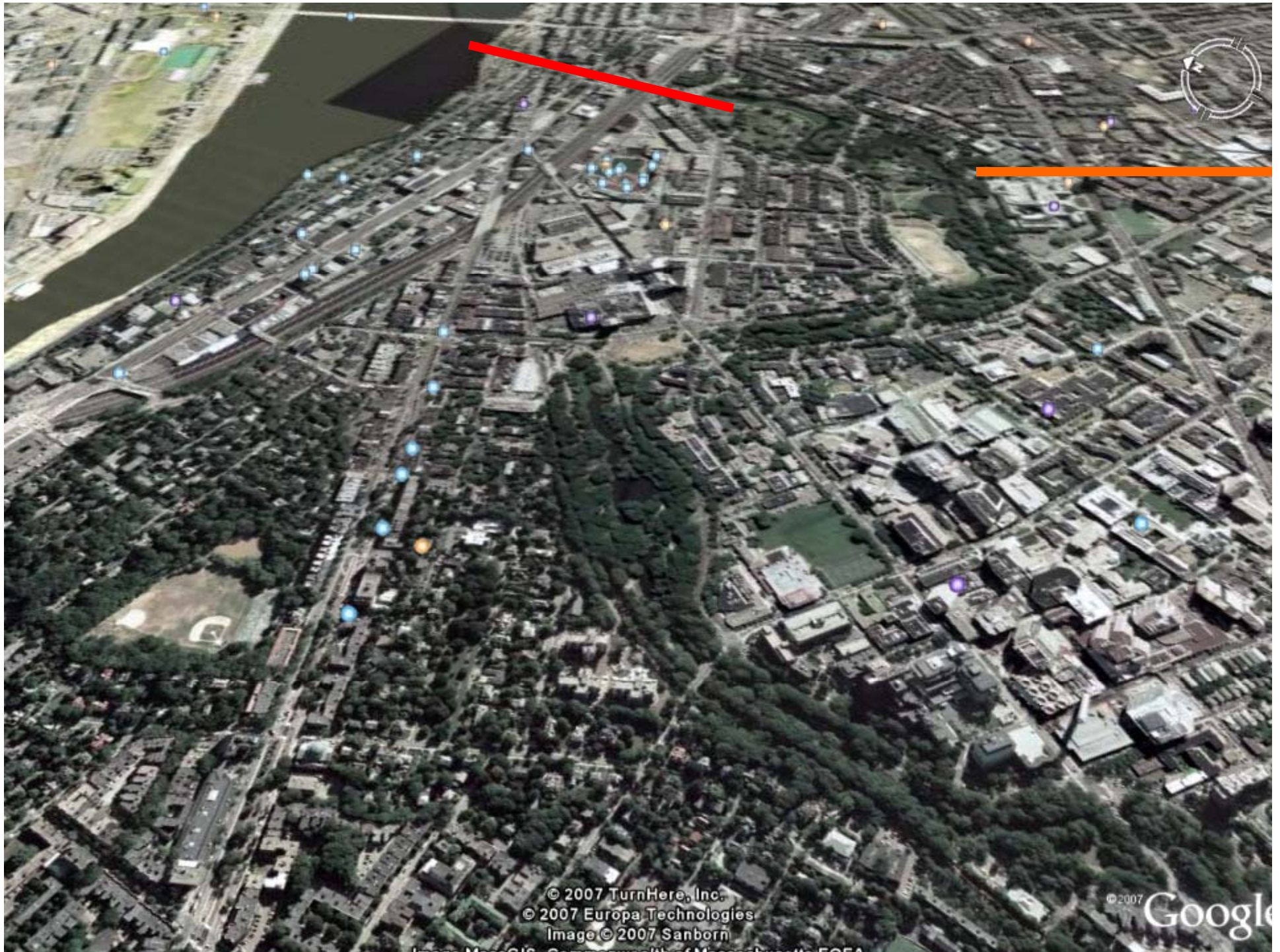
Fens to Charles River  
Sheet 6 of 6



# 2002 concept plan







© 2007 TurnHere, Inc.  
© 2007 Europa Technologies  
Image © 2007 Sanborn

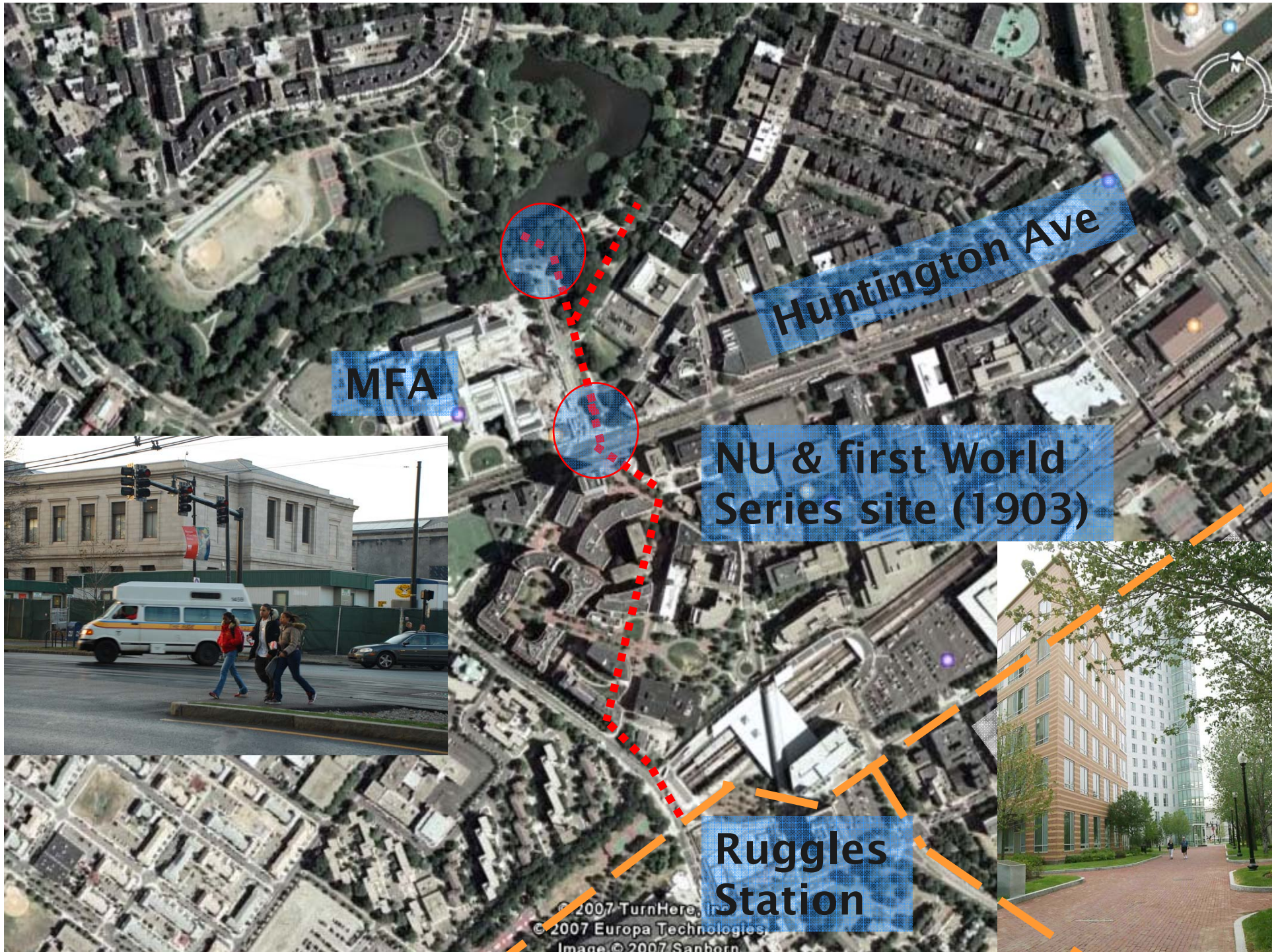
© 2007 Google





# World Series Path









© 2007 TurnHere, Inc.  
© 2007 Europa Technologies  
Image © 2007 Sanborn

© 2007

G





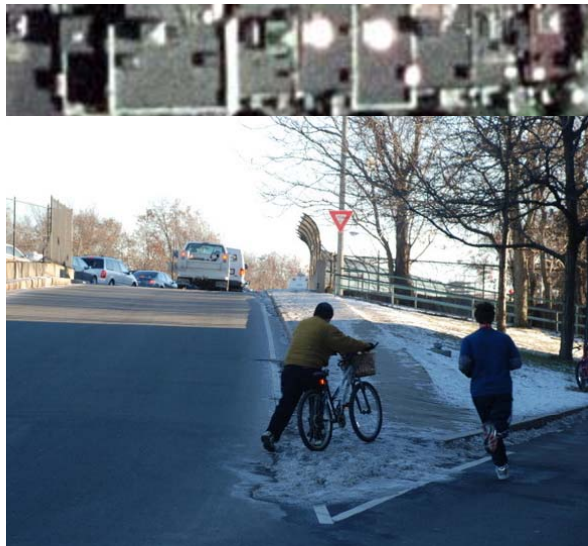
Shifted median

© 2007 TurnHere, Inc.  
© 2007 Europa Technologies  
Image © 2007 Sanborn

Image MassGIS, Commonwealth of Massachusetts EOEA

©2007 Google

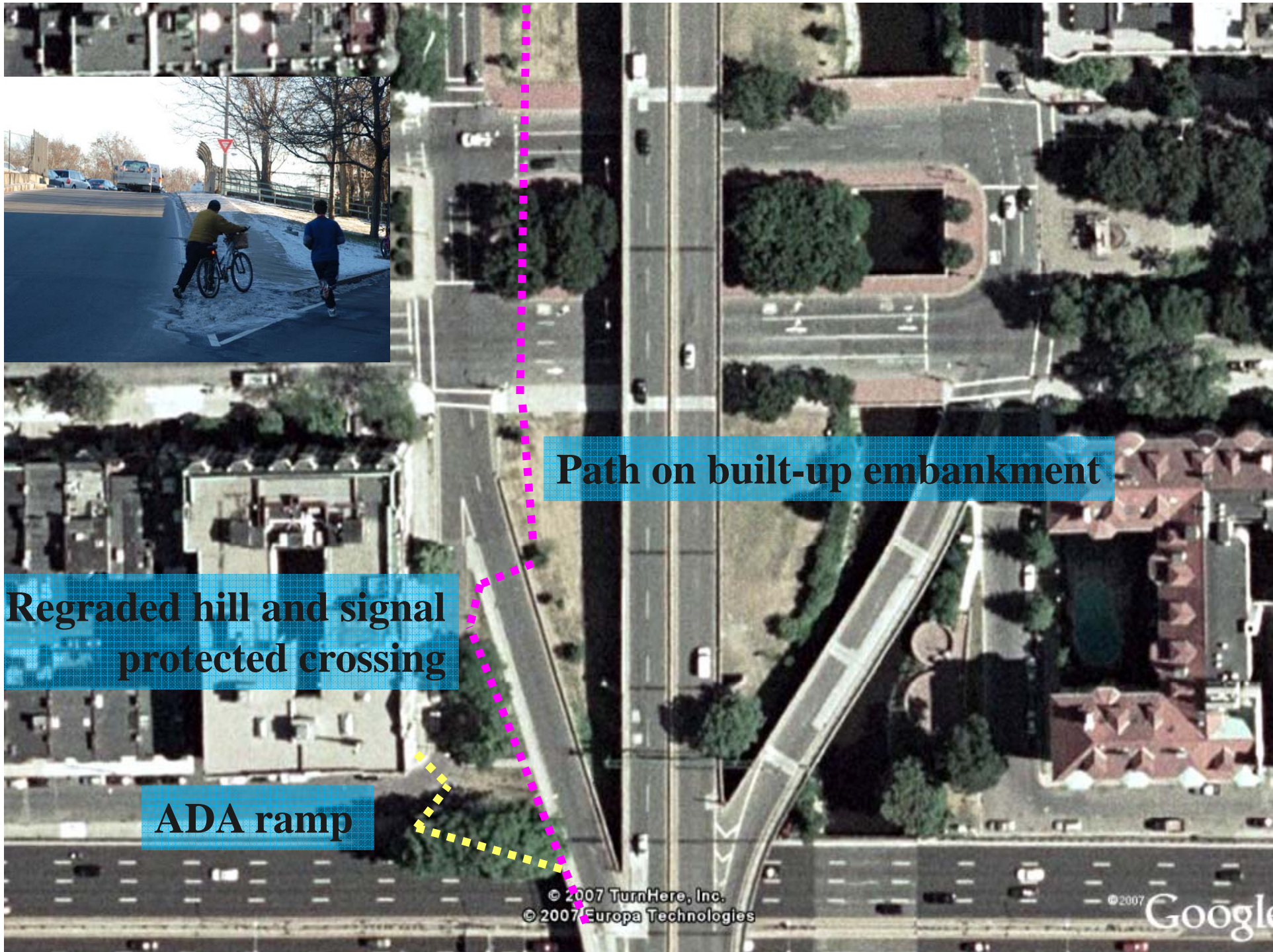




**Regraded hill and signal  
protected crossing**

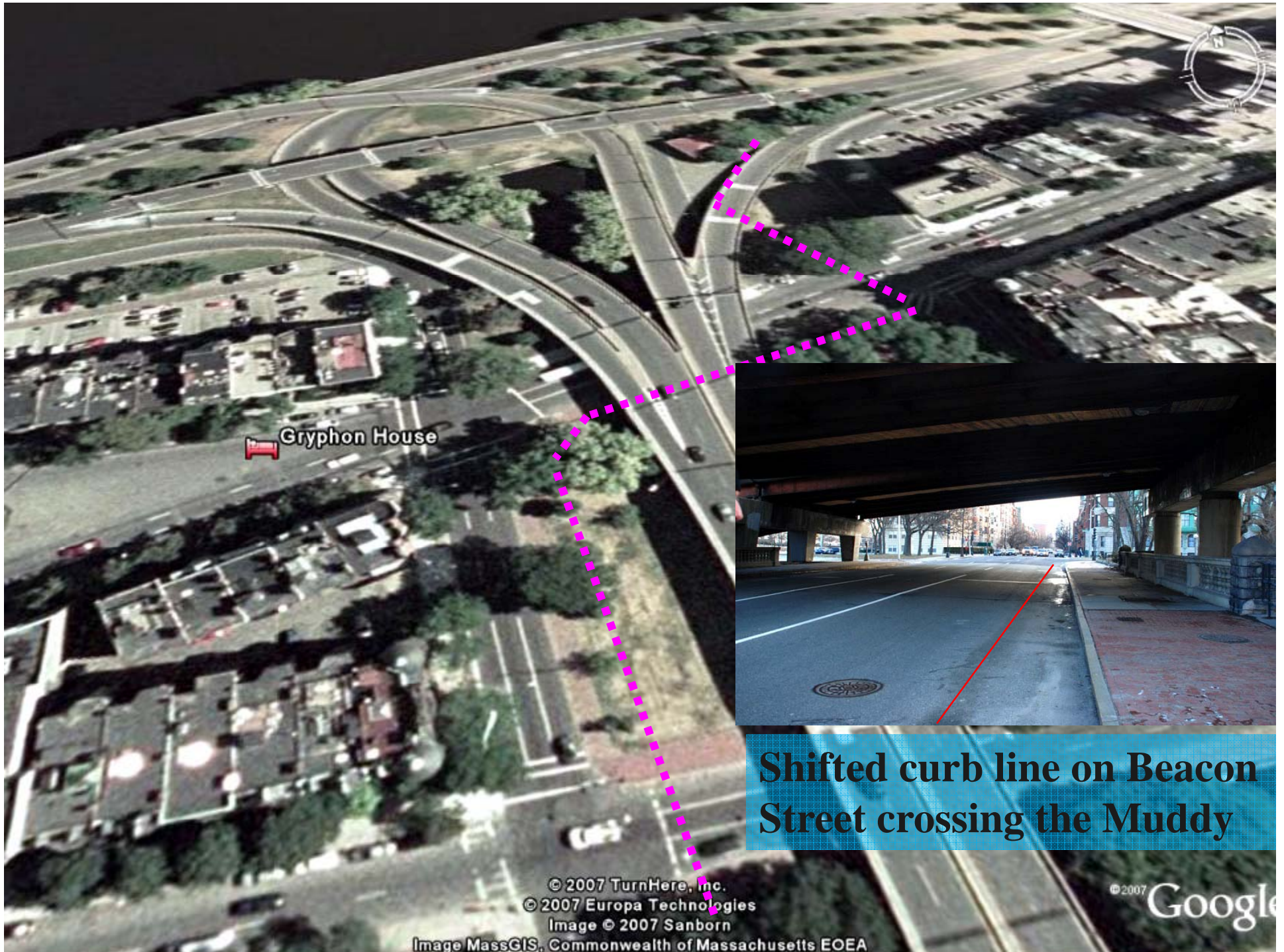


**ADA ramp**



**Path on built-up embankment**





Gryphon House

Shifted curb line on Beacon  
Street crossing the Muddy

© 2007 TurnHere, Inc.  
© 2007 Europa Technologies  
Image © 2007 Sanborn  
Image MassGIS, Commonwealth of Massachusetts EOEA

© 2007 Google

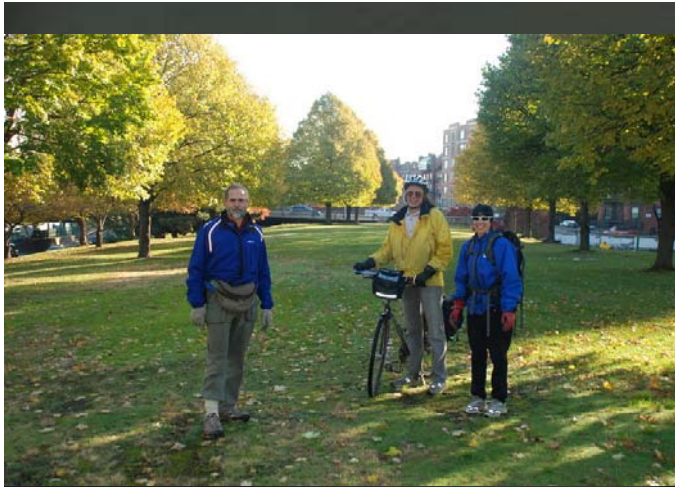




© 2007 TurnHere, Inc.  
© 2007 Europa Technologies  
Image © 2007 Sanborn

© 2007 Google





© 2007 TurnHere, Inc.  
© 2007 Europa Technologies  
Image © 2007 Sanborn







From “The Muddy River Delta”, 1996 proposal





## A Charlesgate Connection





**Reconnecting a lost park**



# The Planning Process and Next steps

- Northeastern studio project
- Design contract
- Enhancement grant
- Staying in touch





**End**