



Fenway – Longwood – Kenmore Priority Projects



Boston Transportation Department

September 20, 2011

Agenda

- **Design Update**
 - Median Refuge at Miner/Arundel
 - Design Development
- **Maintenance Plan and Costs**
- **Boston Water & Sewer Project Update**



Audubon Circle Project Objectives

- **Increase Safety & Usability for All Modes**
- **Reduce Vehicular Dominance of Intersection / Improve Pedestrian and Bicycle Conditions**
- **Enhance Neighborhood Quality of Life Through Design of Public Spaces**

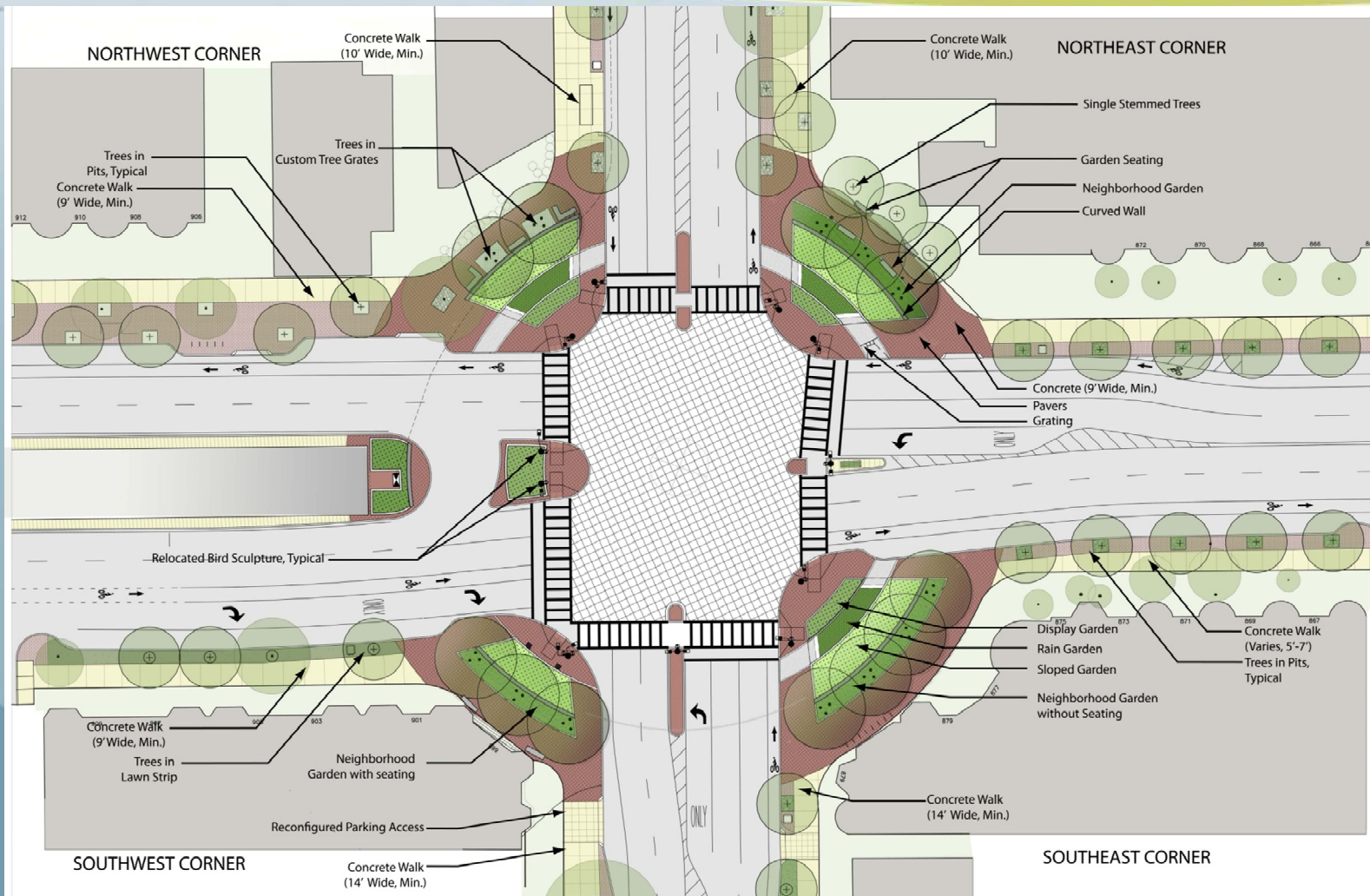


Proposed Design



Fenway-Longwood-Kenmore Priority Projects

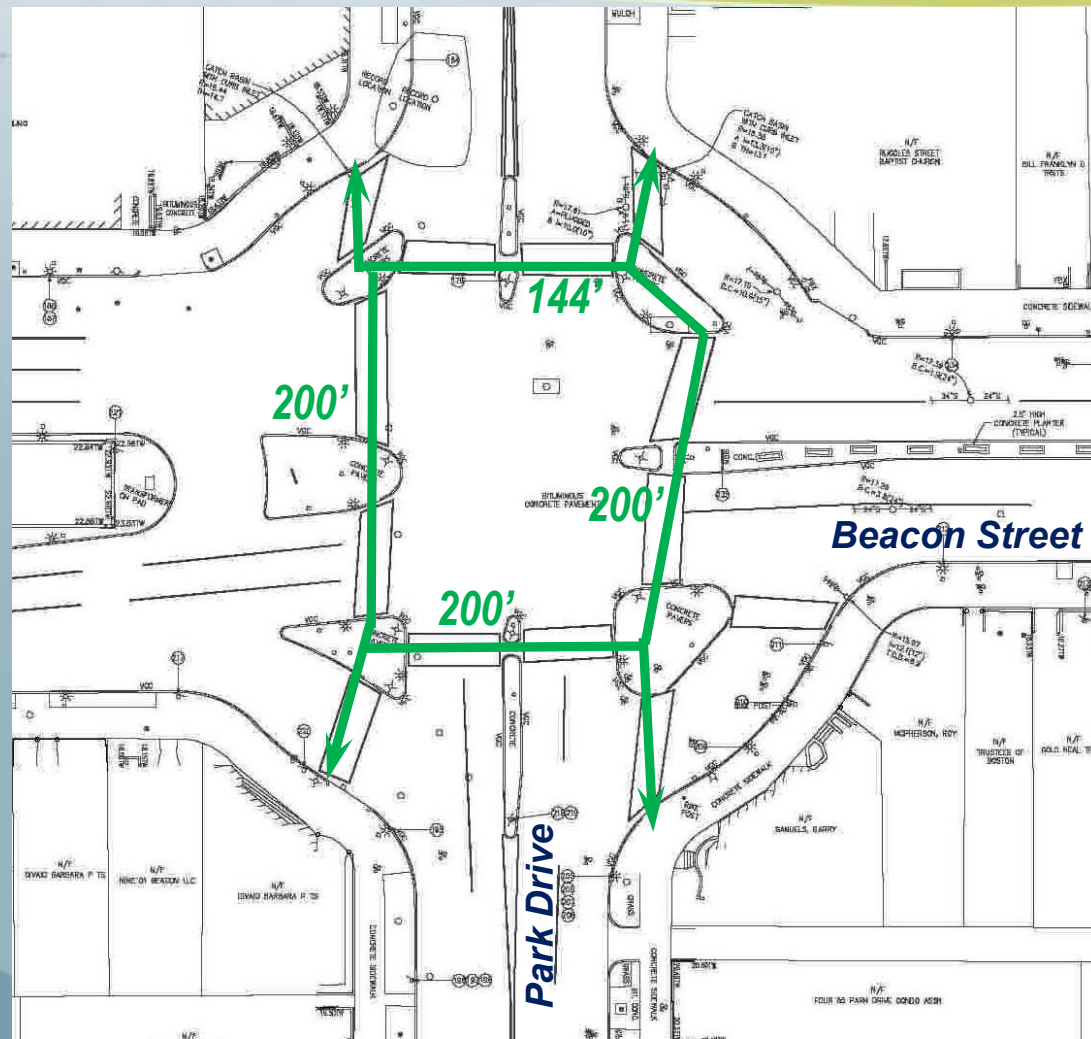
Proposed Design



Fenway-Longwood-Kenmore Priority Projects

Crossing Lengths – Existing

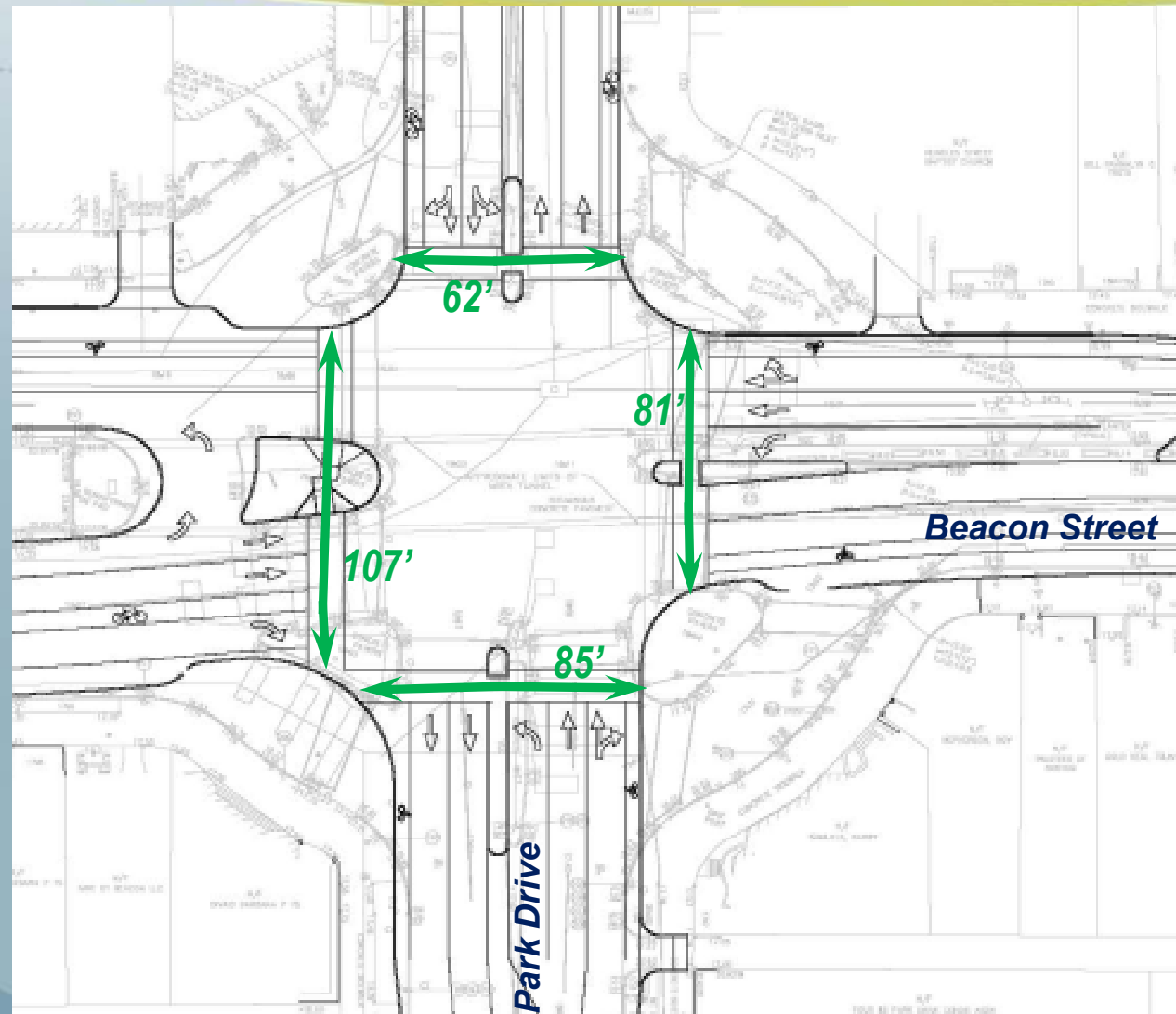
Note: Distances shown are “arrow to arrow”



Fenway-Longwood-Kenmore Priority Projects

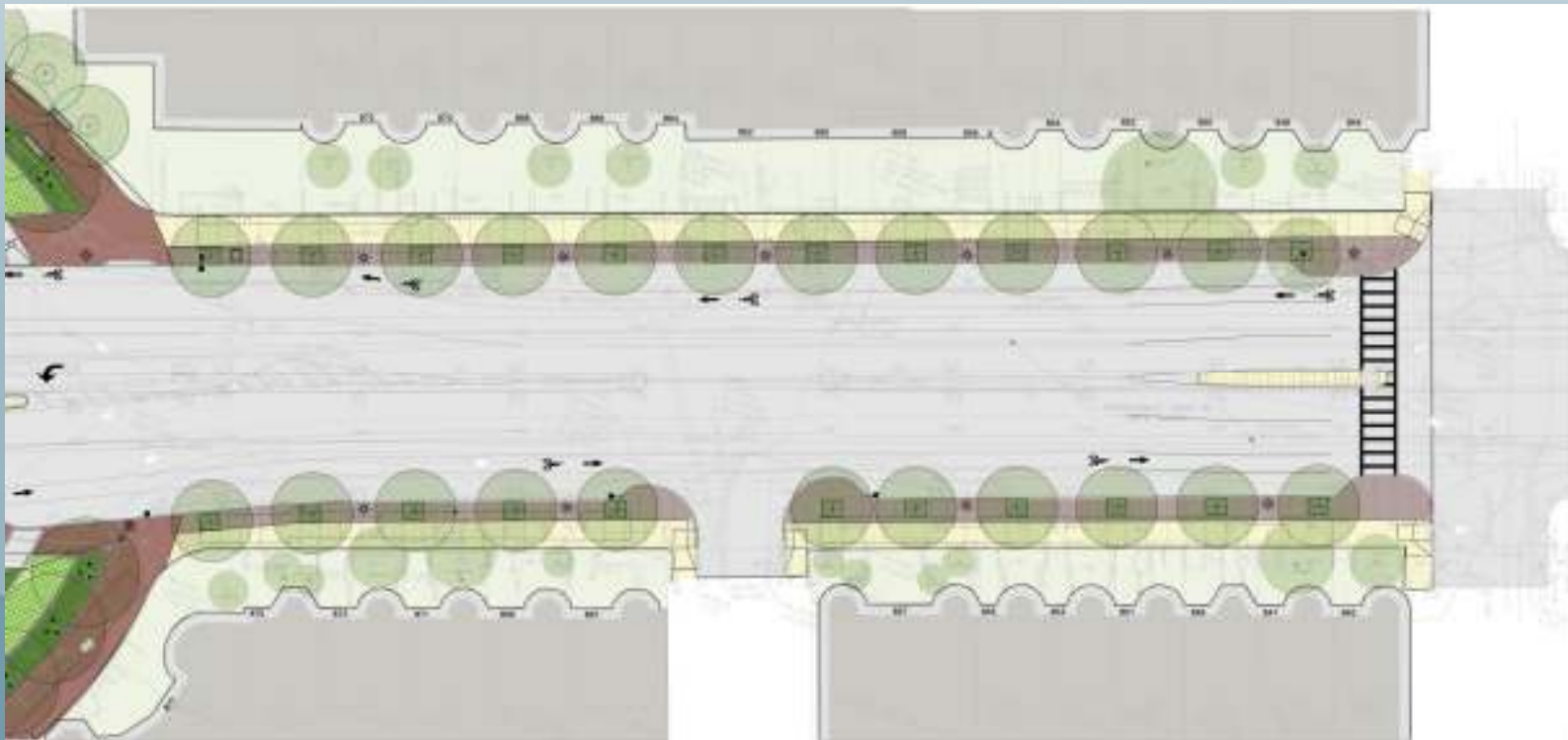
Crossing Lengths - Proposed

Note: Distances shown are “arrow to arrow”



Fenway-Longwood-Kenmore Priority Projects

Proposed Design – Median Refuge



Fenway-Longwood-Kenmore Priority Projects



Pedestrian and Community Benefits

- More potential crossing time in signal cycle
- Crosswalks are shorter, more direct
- Improved sightlines
- Slower traffic; fewer points of conflict with traffic
- Reduction in Greenhouse Gas Emissions



Bicycle Benefits

- Delineated lanes encourage safe, predictable behavior by all users and reduce conflicts
- Bike lanes consistent with existing and planned network; and facilitate future connectivity
- Design reflects Audubon Circle as key crossroads for cyclist activity (Emerald Necklace/BU Bridge/Brookline/Downtown)

