

# Build Upon Past Efforts

## Dudley Square Transportation & Air Quality Study

- BTD/BRA
- November 2001

### Dudley Square Transportation & Air Quality Study



**The Honorable Thomas M. Menino**  
Mayor, City of Boston

Mark Maloney  
Director, Boston Redevelopment Authority

Andrea D'Amato  
Commissioner, Boston Transportation Department

November 2001

# Build Upon Past Efforts

## Dudley Square Transportation Action Plan

- BTD/BRA
- December 2009



City of Boston



Dudley Square Vision Initiative

Transportation Action Plan

Prepared for:

Boston Transportation Department  
Boston Redevelopment Authority

Submitted by:

Traffic Solutions, LLC  
50 Franklin Street  
Suite 402  
Boston, MA 02110

December 2009

DRAFT REPORT

# Build Upon Past Efforts

## Dudley Square Parking Related Hurdles to Economic Growth

- Dudley Square Main Streets
- November 2012

### **Dudley Square**

Parking Related Hurdles to Economic Growth



**Purpose:**

To objectively state facts about employee and customer parking in the Dudley Square area, and to represent the interests of existing businesses in a public discussion about parking in Dudley Square.

# Build Upon Past Efforts

## Dudley Square Transportation Action Plan

- City of Boston
- December 2012



## Dudley Square Municipal Office Facility Parking Management Plan

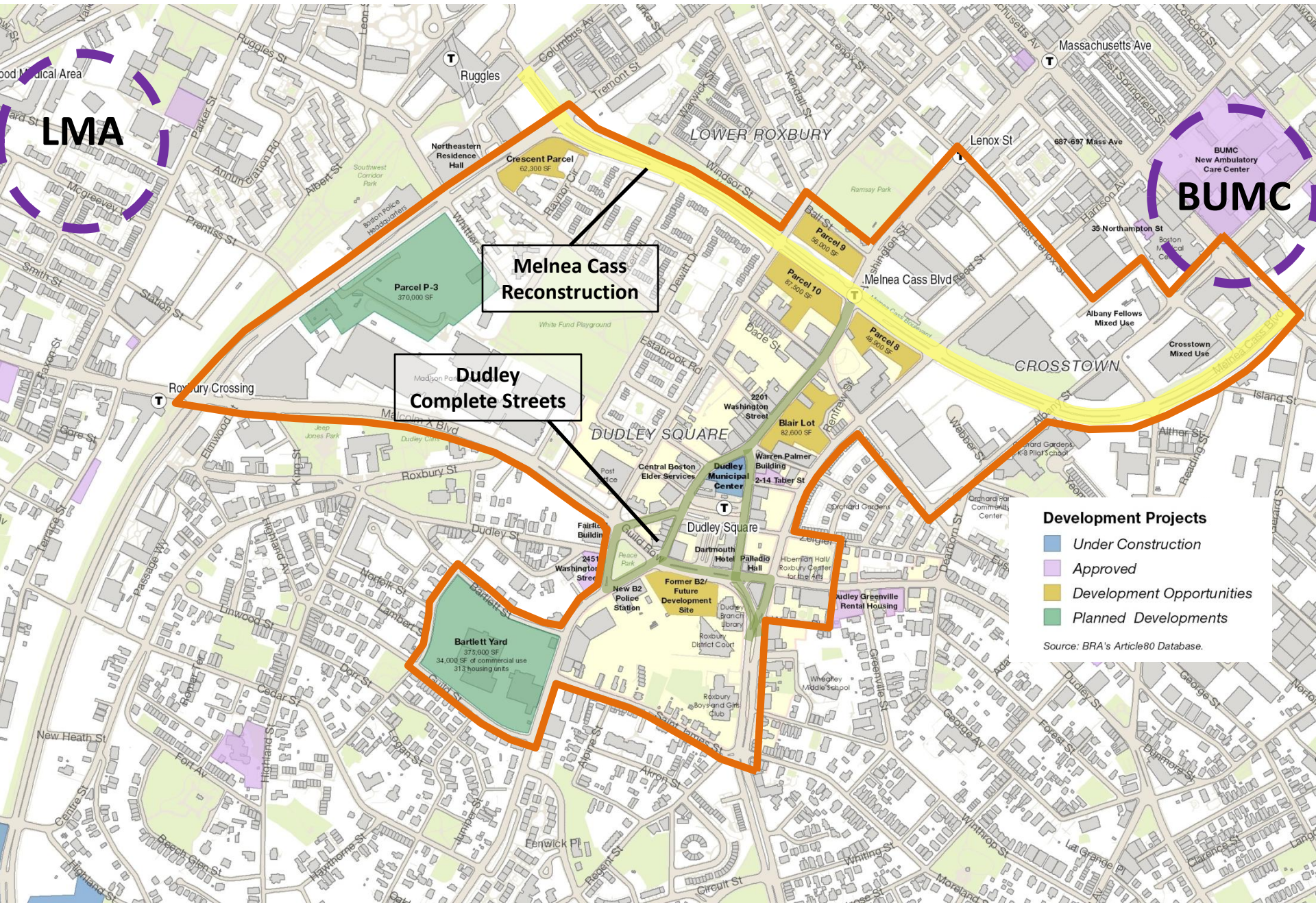
Vanasse Hangen Brustlin Inc.

Dudley Vision Advisory Task Force  
Thursday December 13, 2012





# Study Area



Melnea Cass Reconstruction

Dudley Complete Streets

- Development Projects**
- Under Construction
  - Approved
  - Development Opportunities
  - Planned Developments

Source: BRA's Article80 Database.

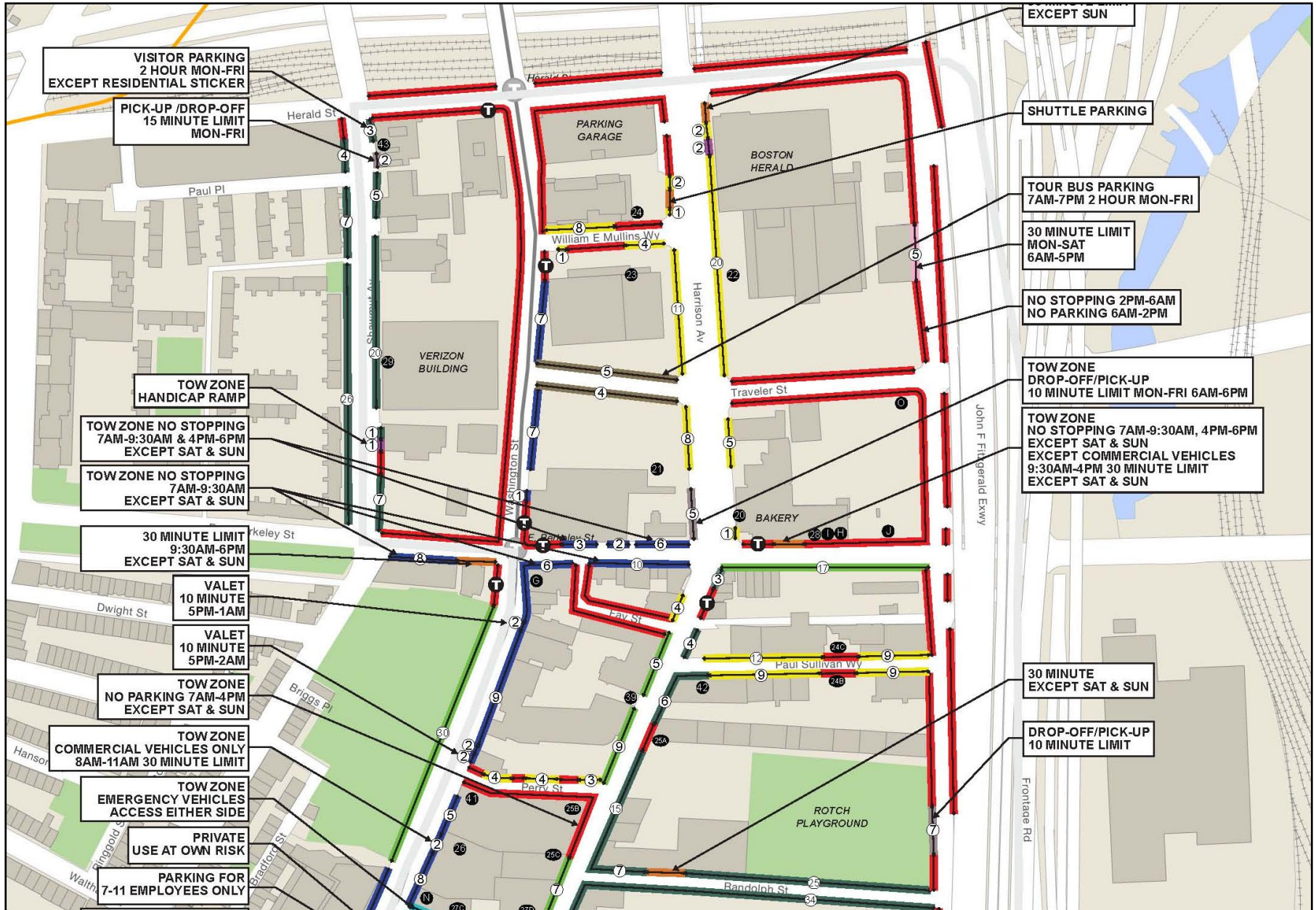


# Comprehensive Inventory – Off – Street Parking





# Comprehensive Inventory – On-Street Conditions



**VISITOR PARKING**  
2 HOUR MON-FRI  
EXCEPT RESIDENTIAL STICKER

**PICK-UP /DROP-OFF**  
15 MINUTE LIMIT  
MON-FRI

**TOW ZONE**  
HANDICAP RAMP

**TOW ZONE NO STOPPING**  
7AM-9:30AM & 4PM-6PM  
EXCEPT SAT & SUN

**TOW ZONE NO STOPPING**  
7AM-9:30AM  
EXCEPT SAT & SUN

**30 MINUTE LIMIT**  
9:30AM-6PM  
EXCEPT SAT & SUN

**VALET**  
10 MINUTE  
5PM-1AM

**VALET**  
10 MINUTE  
5PM-2AM

**TOW ZONE**  
NO PARKING 7AM-4PM  
EXCEPT SAT & SUN

**TOW ZONE**  
COMMERCIAL VEHICLES ONLY  
8AM-11AM 30 MINUTE LIMIT

**TOW ZONE**  
EMERGENCY VEHICLES  
ACCESS EITHER SIDE

**PRIVATE**  
USE AT OWN RISK

**PARKING FOR**  
7-11 EMPLOYEES ONLY

**EXCEPT SUN**

**SHUTTLE PARKING**

**TOUR BUS PARKING**  
7AM-7PM 2 HOUR MON-FRI

**30 MINUTE LIMIT**  
MON-SAT  
6AM-5PM

**NO STOPPING 2PM-6AM**  
NO PARKING 6AM-2PM

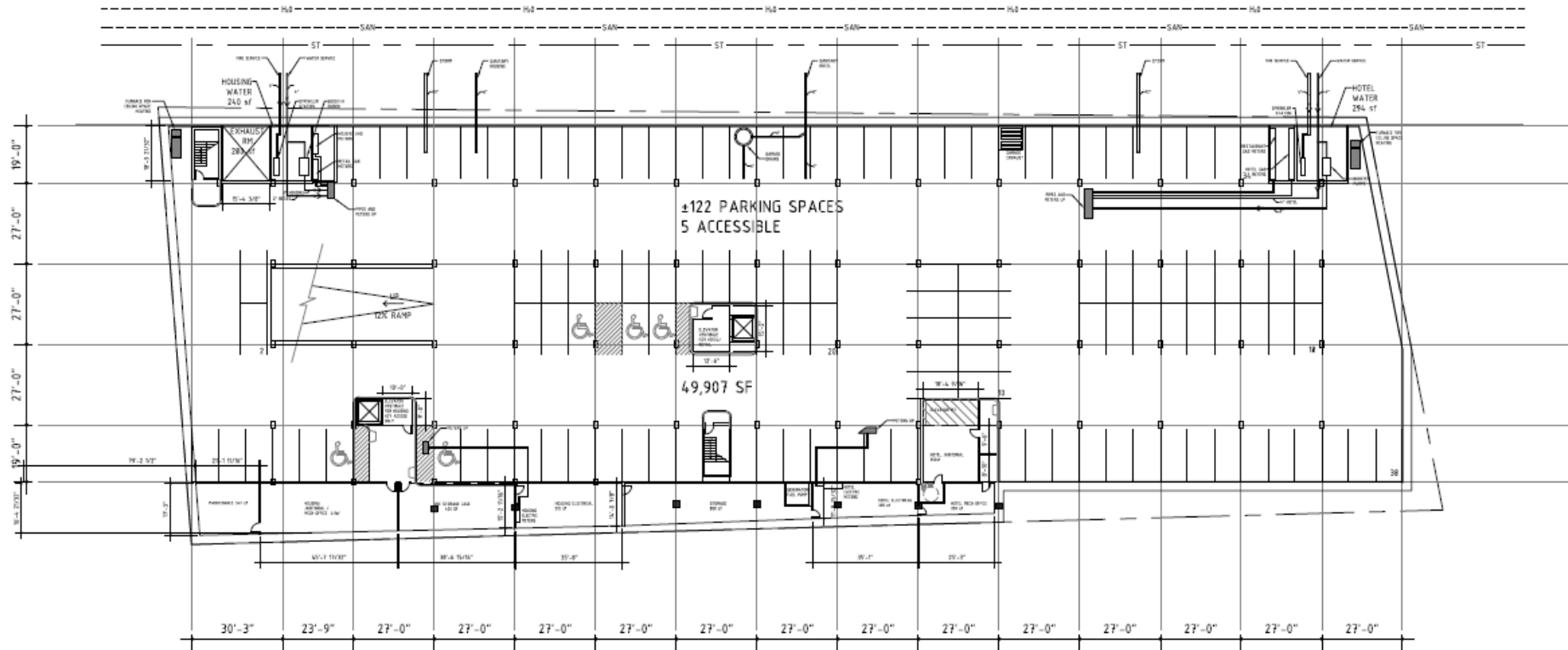
**TOW ZONE**  
DROP-OFF/PICK-UP  
10 MINUTE LIMIT MON-FRI 6AM-6PM

**TOW ZONE**  
NO STOPPING 7AM-9:30AM, 4PM-6PM  
EXCEPT SAT & SUN  
EXCEPT COMMERCIAL VEHICLES  
9:30AM-4PM 30 MINUTE LIMIT  
EXCEPT SAT & SUN

**30 MINUTE**  
EXCEPT SAT & SUN

**DROP-OFF/PICK-UP**  
10 MINUTE LIMIT

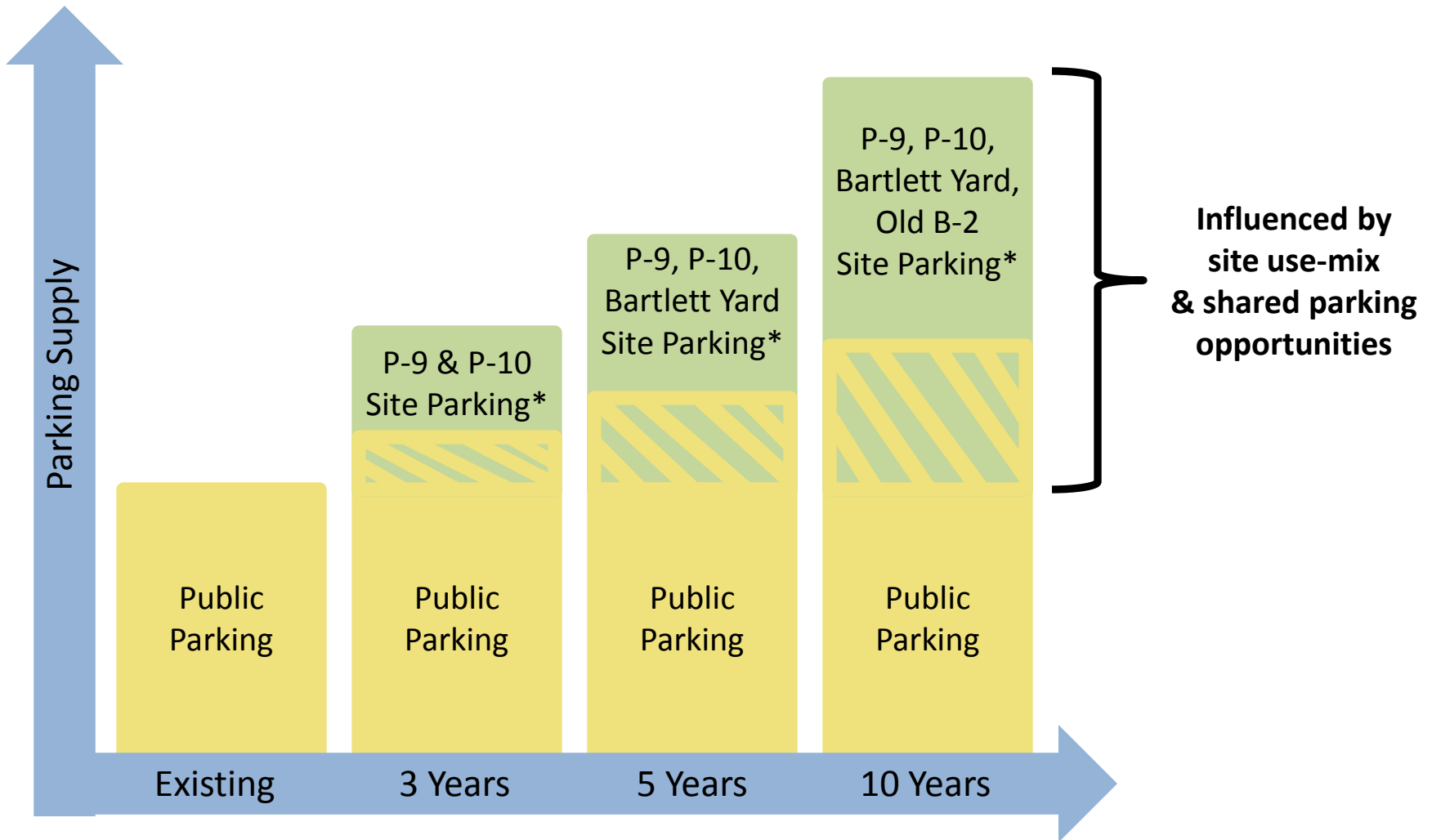
# Comprehensive Inventory – Future Development



<h2 style="margin: 0;">NADAAA</h2>	102 WASHINGTON ST #2 BOSTON, MA 02108 T: (617) 5425548 F: (617) 5415535	<b>PARCEL 9</b> BOSTON, MA	<b>BASEMENT PLAN</b> SCALE: 1/32" = 1'-0" NO. DATE: FEBRUARY 05, 2013



# Changes to Off-Street Parking Supply



\*Includes demand by new retail uses

# Develop Recommendations

- Build upon concepts from past efforts
- Define roles – City; Community (Residents, Businesses, property owners); Developers
- Utilize progressive parking management strategies

