

---

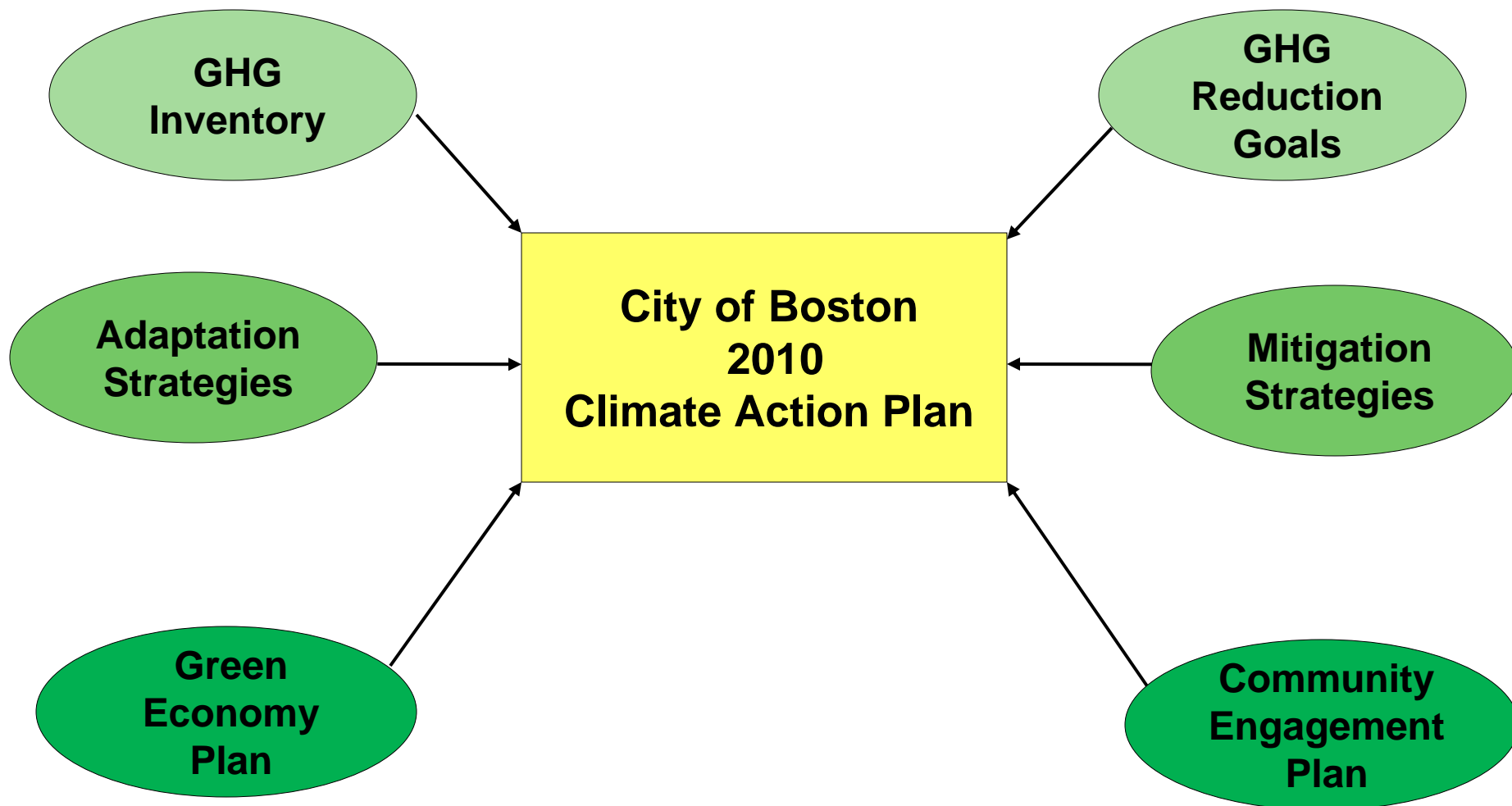
# Boston Climate Action Plan: Charge, Structure, Schedule and Workplan

---

May 26, 2009

Dr. Jonathan Raab, Raab Associates (MIT)  
Cynthia Parker, IISC

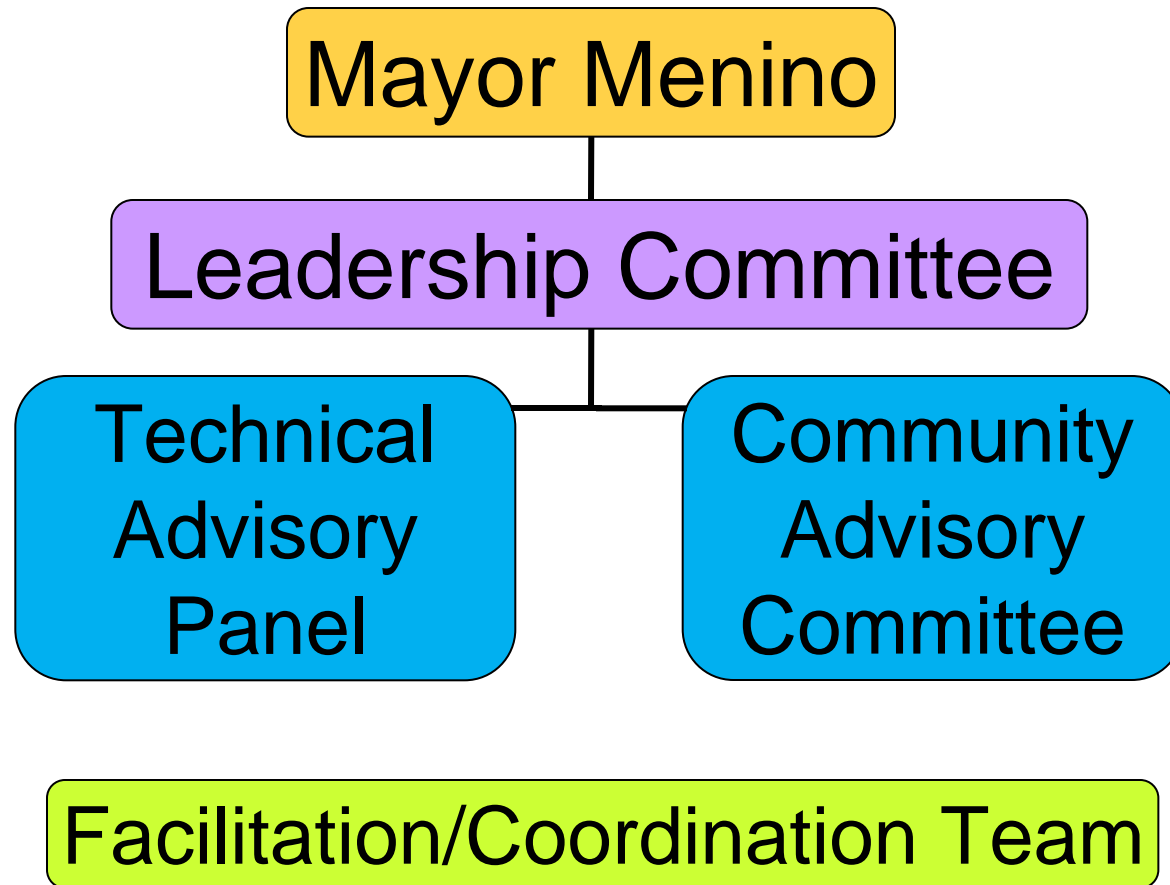
# City of Boston Climate Action Plan Update Process



---

# Climate Action Plan Revision

- Include recent policies and programs
  - Develop new policies and programs, incorporating Leadership Committee recommendations
  - Show how Boston reaches its goals, estimating effect on GHG emissions of all programs
  - Separate Municipal and Community goals and programs
  - Address adaptation
  - Engage communities in implementing the plan
  - Maximize green economy
-



---

# Leadership Committee Tasks

- Review 2007 CAP and make recommendations for 2010 CAP
  - Set goals for community-wide reductions
  - Recommend **mitigation** strategies necessary to meet goals and ways to maximize opportunities
  - Evaluate the risks from sea-level rise and other consequences of climate change, and recommend **adaptation** strategies
  - Develop a plan to engage all residents and sectors of the community
  - Identify economic and workforce development opportunities
-

# Schedule - Boston Climate Action Plan Update Process

Month/Year	May '09	Jun '09	July '09	Aug '09	Sept '09	Oct '09	Nov '09	Dec '09	Jan '10	Feb '10	Mar '10	→	Dec '10
------------	---------	---------	----------	---------	----------	---------	---------	---------	---------	---------	---------	---	---------



**Leadership Committee Meetings**

26

21

**Community Advisory Committee Meetings**

**Technical Advisory Panel**

**Research/Analysis**

**Community Engagement Plan**

**Leadership Committee Final Report**

**Boston GHG Final Plan Update**

---

# Leadership Committee Workplan

- Meeting #2 (July 21)
    - Discuss GHG reduction goals
    - Evaluate existing and planned mitigation measures (programs, policies, and laws), and identify gaps
    - Review and advice on Community Advisory Committee
-

---

# Leadership Committee Workplan

- Meeting #3 (September)
    - Identify most promising additional mitigation measures
    - Discuss framework for developing an adaptation plan
    - Discuss framework for evaluating green economy impacts
-



---

# Leadership Committee Workplan

- Meeting #4 (November)
    - Select additional mitigation measures
    - Identify most promising adaptation measures
  - Meeting #5 (January)
    - Review mitigation strategy recommendations
    - Develop adaptation strategy
    - Review preliminary public engagement strategy
-

---

# Leadership Committee Workplan

- Meeting #6 (March)
    - Finalize recommendations
      - GHG Reduction Goals
      - Mitigation strategy
      - Adaptation strategy
      - Community engagement plan
      - Green jobs plan
-

---

# Community Advisory Committee

## Tasks

- Input and feedback on the Leadership Committee's recommendations for climate action
  - Input and feedback on educational materials for businesses and households about the Climate Action Plan and related programs
  - Initial plan for educating the Boston community (residents, businesses, and institutions) about the Climate Action Plan and engaging them in actions they can take to support implementing the plan and achieving the goals
-

---

# Community Advisory Committee Members

Diverse people from:

- Different demographic groups
  - Playing different roles in Boston's economy
  - Working on different issue areas
-

---

# Community Advisory Committee Members

People diverse demographic groups, such as:

- ❑ Residents of different neighborhoods
  - ❑ Children, teens, young adults, families
  - ❑ Racial, ethnic, and immigrant communities
  - ❑ Faith/spiritual traditions
  - ❑ Commuters
  - ❑ Tourists
-

---

# Community Advisory Committee Members

People playing different roles in Boston's economy, such as:

- ❑ Business sector—owners, managers, employees of small, medium and large businesses
  - ❑ Public and nonprofit sector agencies
  - ❑ Landlords—large and small; commercial and residential
-

---

# Community Advisory Committee Workplan

- Nominations will be accepted through mid/late June
  - Four meetings between July 2009 and March 2010
-

# Technical Advisory Panel

*Expertise to help identify effective strategies to reduce greenhouse gas emissions, address adaptation issues, and develop the green economy, including:*

- ❑ Adaptation
- ❑ Buildings
- ❑ Green workforce development
- ❑ Land use
- ❑ Other mitigation areas (such as urban forestry, solid waste)
- ❑ Renewable energy
- ❑ Transportation

*Expertise to help identify effective strategies for broad education and engagement, including:*

- ❑ Behavioral Economics
- ❑ Community engagement, particularly but not exclusively on climate action
- ❑ Community organizing and mobilization
- ❑ Popular education
- ❑ Public health prevention and behavior change methods
- ❑ Social marketing and communications
- ❑ Social media and technology