



Dudley Square Complete Streets Design Project

Public Meeting #4

July 29, 2013

6:00pm – 8:00pm

Dudley Branch Library

65 Warren St., Boston, MA



Agenda

- Open House
- Welcome and Introductions
- Study Overview
- Recap of Previous Meetings
- Preferred Design Alternative
- Streetscape/Urban Design
- Question and Answer
- Wrap-Up and Next Steps

6:00-6:30

6:30-6:50

6:50-7:20

7:20-7:45



Meeting “Ground Rules”

- Keep Time in Mind
- Be Respectful of Your Neighbors
- Listen to the Moderator
- Focus on Design Details
- Use the Parking Lot
- Success is a Shared Responsibility





Dudley Square Complete Streets Design Project

- Recognize the history of the square
- Build on foundation of work done to date
- Coordinate with ongoing and future projects
- Develop solutions that address identified transportation problems
- Integrate Boston Complete Streets guidelines
- Design for improvements that will get built



Project Team



**BOSTON
TRANSPORTATION
DEPARTMENT**



**PARSONS
BRINCKERHOFF**

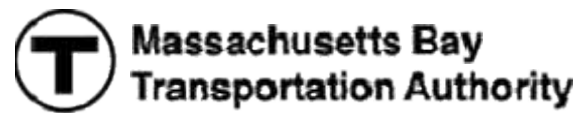


**PARSONS
BRINCKERHOFF**





Coordination with Other Projects



MELNEA CASS
BOULEVARD
DESIGN PROJECT



**PARSONS
BRINCKERHOFF**





Outreach is Ongoing



- Meeting #1: Intro/Problem ID/History
- Meeting #2: Alternatives – Part 1
- Meeting #3: Alternatives – Part 2
- Meeting #4: Streetscape/Urban Design

Ongoing Coordination



Summary of Preferred Alternative

Bus Circulation	<ul style="list-style-type: none"> • 180+ miles reduction in bus travel → air quality improvements • Creates opportunity for public/pedestrian space within bus station • Eastbound buses use Roxbury Street to bus station
Traffic Flow	<ul style="list-style-type: none"> • Base year LOS remains the same • Two-way Washington Street • More direct circulation
Parking	<ul style="list-style-type: none"> • Loss of 6 on-street parking spaces
Pedestrian Accommodations	<ul style="list-style-type: none"> • Opportunities for shorter crosswalks and ADA improvements • Potential for new pedestrian signal locations
Bicycle Accommodations	<ul style="list-style-type: none"> • Cycle track along Dudley Street / shared lanes elsewhere • Increased bicycle parking
Streetscape	<ul style="list-style-type: none"> • Opportunities for lighting, trees, and other amenities



Streetscape Components



People/User
 Paving Materials
 Street Trees
 Seating
 Bike Racks
 Litter/Recycling
 Signage
 Lighting
 Drainage
 Art



Pedestrians/Bikes/Cars





Paving Materials





Street Trees





Rain Gardens





Site Furnishings - Seating





Site Furnishings – Bikes, Litter & Signage





Interpretation





Proposed Dudley Square



**PARSONS
BRINCKERHOFF**





Existing Street Tree Analysis



● Keep



● Determine

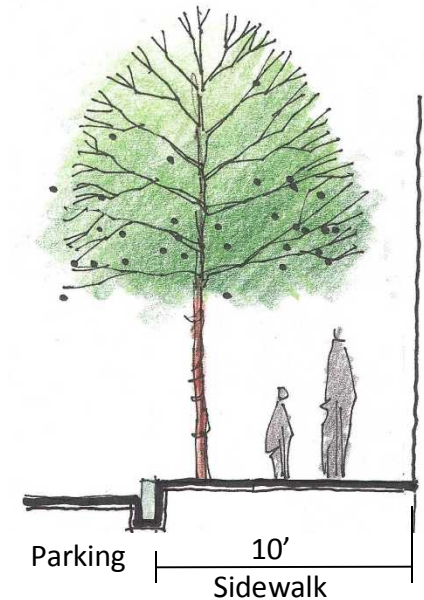
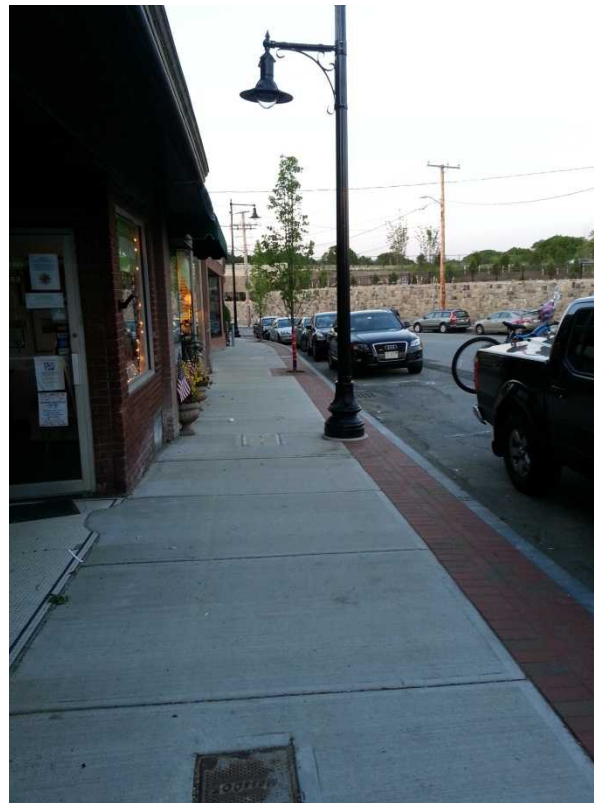
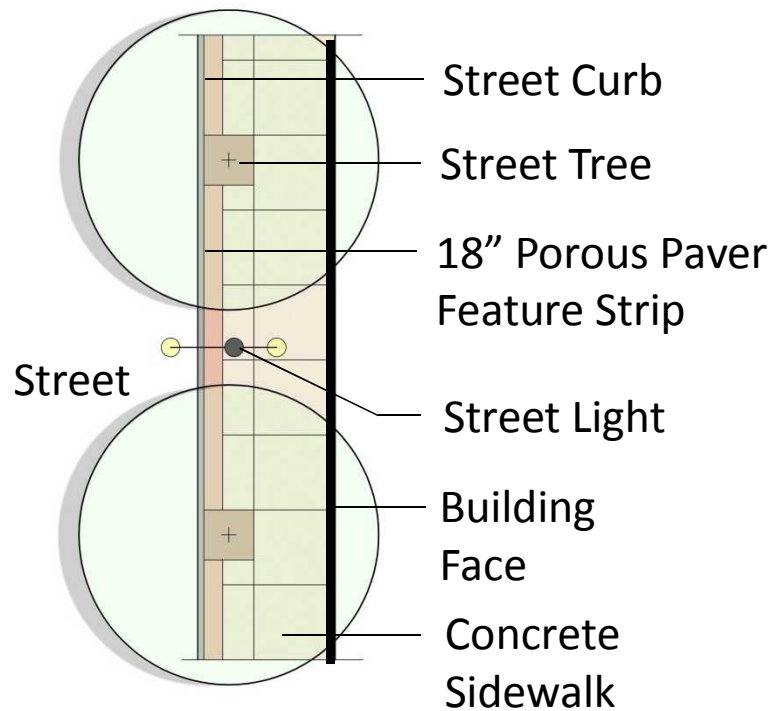


● Replace



Washington and Warren Streets

Walk Width Varies
10' to 10'-6"





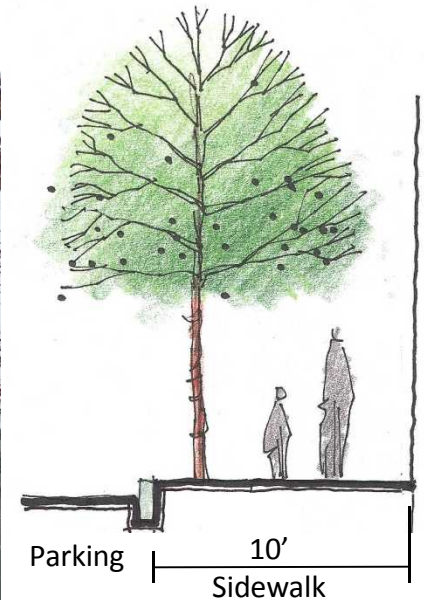
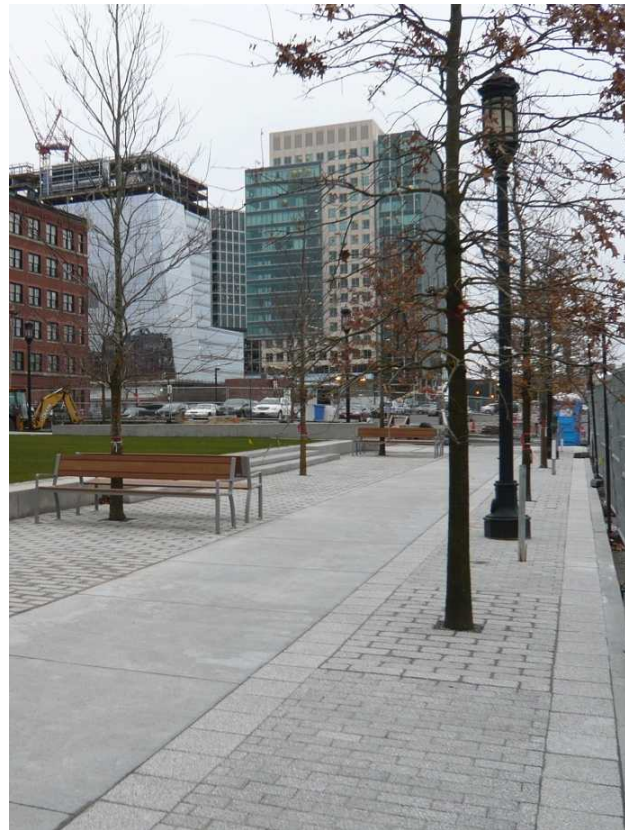
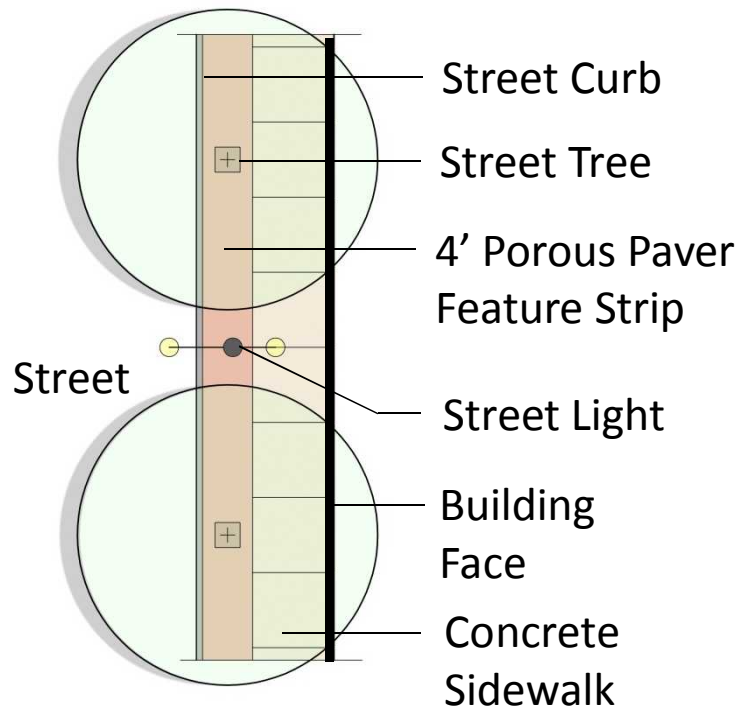
Washington Street





Washington and Warren Streets

Walk Width Varies
10' to 10'-6"





Washington Street



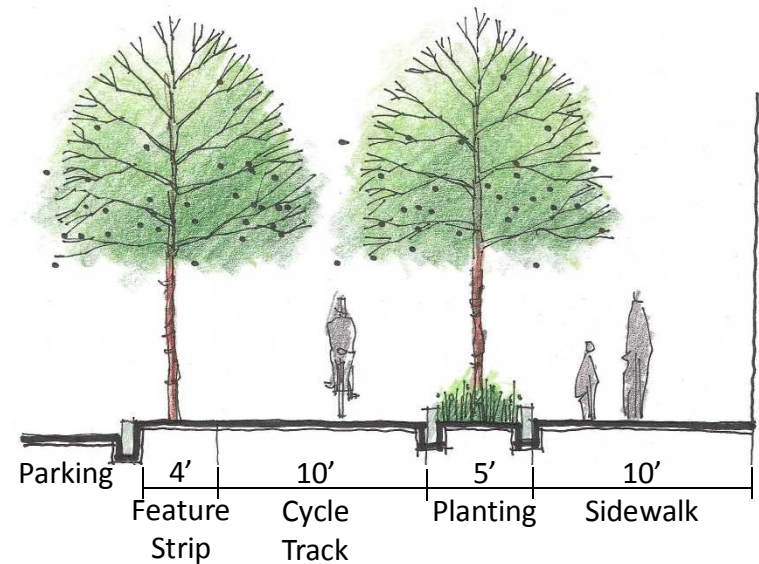
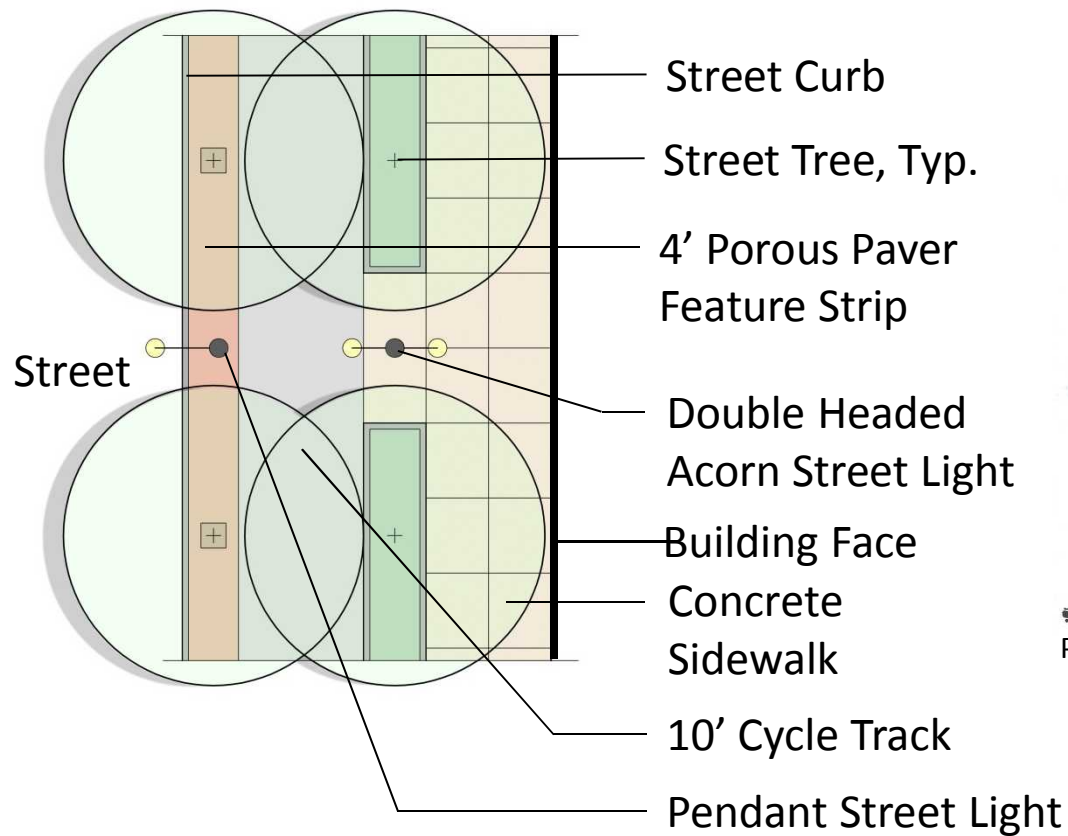


Washington Street





Dudley Street





Dudley Street





Discussion / Question & Answer



Next Steps

- Finalize overall concept for Dudley Square
- Continue coordination
 - Dudley Municipal Facility
 - Dudley Branch Library
 - Gourdin Park
 - Malcolm X cycle track
 - Utility coordination
- Develop 25% design for streets and sidewalks



Contact

Boston Transportation Department

Patrick Hoey, Project Manager

617-635-2454

Patrick.Hoey@cityofboston.gov

<http://www.cityofboston.gov/transportation>