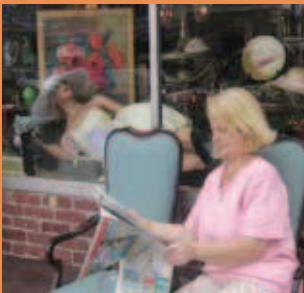


Brighton



Brighton, the western gateway to Boston, is a most inviting neighborhood and home to generations of families, young professionals and immigrants from around the world.

Brighton has a rich history and is well known for its great agricultural and horticultural industries dating back to the early to mid 1700's. General George Washington came to Brighton in 1775 to buy fresh meat for his soldiers. Brighton has received historic district designation and is a showcase to many fine examples of 18th and 19th century architecture.

The Brighton Main Streets district is an attractive, vibrant, and pedestrian friendly shopping area that is welcoming for both residents and visitors alike.

Dining & Food

Brighton features a vast variety of restaurants including fine French, Hungarian, Korean, Greek, Italian, Irish, American, Indian, and Haitian foods. Brighton is also home to many local Irish Pubs as well as a new upscale nightclub that features great food and music.

Directions

By MBTA: Green Line to Kenmore Square Station. Take the #57 bus from Kenmore Square to Brighton Center.

By Car: From downtown, take Storrow Drive to Allston/Brighton exit. Follow Cambridge Street to the third light, bear left at Twin Donuts. Cambridge Street becomes Washington Street at Brighton Center. Continue along Washington Street to Oak Square.



Sights to See

Brighton Congregational Evangelical Church

Listed on the National Register of Historic Places in 1997. The original church building, built in 1827, was destroyed in a fire and the existing structure was built in 1921.

Market Street Historic Burial Ground

Contact Boston Parks Department at 635-PARK for visiting hours.

Oak Square School

Built in 1894, this Boston landmark is the only wooden schoolhouse remaining in Boston.

Washington/Rourke Building

Erected in 1905, this famous building was completely restored in 2000.

